

**COACHELLA
VALLEY
ASSOCIATION OF
GOVERNMENTS**



**FISCAL YEAR
2018/19
BUDGET**

June 25, 2018

MEMBER JURISDICTIONS

City of Blythe
City of Cathedral City
City of Coachella
City of Desert Hot Springs
City of Indian Wells
City of Indio
City of La Quinta
City of Palm Desert
City of Palm Springs
City of Rancho Mirage
County of Riverside
Agua Caliente Band of Cahuilla Indians
Cabazon Band of Mission Indians

COACHELLA VALLEY ASSOCIATION OF GOVERNMENTS

73-710 Fred Waring Drive, Suite 200

Palm Desert, CA 92260

Phone: (760) 346-1127

Fax: (760) 340-5949

TABLE OF CONTENTS

Budget Introduction.....	Page 1
Budget Overview.....	Page 4
Revenue Charts.....	Page 11
Expenditure Charts.....	Page 12
Policy Committee Structure Chart.....	Page 13
Membership Dues Assessments.....	Page 14
Capital Project – Five Year Summary.....	Page 15
Staff Organizational Chart.....	Page 18
Fiscal Overview.....	Page 19
Fund Summary.....	Page 20
Overall Agencywide Summary.....	Page 21
Budget By Programs.....	Page 23
Program Budgets.....	Page 25
Transportation.....	Page 26
Community Resources.....	Page 30
Energy and Environmental Resources.....	Page 33
Administration.....	Page 38
Fund Detail.....	Page 41
General Fund.....	Page 42
Energy Conservation / Partnership.....	Page 43
Aerial Photography / Events.....	Page 44
Bus Passes & Homeless.....	Page 45
Tire Recycling.....	Page 46
Desert Community Energy.....	Page 47
AB2766	Page 48
Used Oil Recycling	Page 49
SCAG / OWP	Page 50
AB939	Page 51
TUMF Program	Page 52
Measure A.....	Page 53
RCTC LTF / PP&M & Signal Synchronization.....	Page 54
CV Link & ATP.....	Page 55
MSHCP	Page 56
Regional Street Sweeping	Page 57
COLMAC	Page 58
Annual Salary Schedule & Approved Classifications.....	Page 59
Acronyms & Abbreviations.....	Page 61

CVAG FY 2018/19 BUDGET - INTRODUCTION

To: The Honorable 65 Members of CVAG's General Assembly

Riverside County Board of Supervisors, Mayors and City Council Members from the Cities of Blythe, Cathedral City, Coachella, Desert Hot Springs, Indian Wells, Indio, La Quinta, Palm Desert, Palm Springs, and Rancho Mirage, and Tribal Council Chairmen and Members from the Agua Caliente Band of Cahuilla Indians and the Cabazon Band of Mission Indians

Date: June 4, 2018

This has been a momentous year for CVAG, and not just because we're celebrating our 45th anniversary. It seems fitting that we're presenting this budget just as our individual member jurisdictions are voting to approve the Third Amendment and Restatement of the Joint Powers Agreement. The agreement will formalize the membership of our two tribal nations – the Agua Caliente Band of Cahuilla Indians and the Cabazon Band of Mission Indians. But it also serves as a recommitment to our common mission of working together, as a region, to plan for growth and address the transportation, energy and social issues that aren't limited by any single city's geographic boundaries.

Perhaps no transportation project represents the concept of connecting our region better than CV Link. Hundreds of people attended the February grand opening celebration for the first, 2.3-mile segment, which runs from Vista Chino Road in Palm Springs to Ramon Road in Cathedral City. The first segment runs adjacent to local neighborhoods, including the Escena development, as well as the Cimmaron Golf Course. The public response has been so overwhelming that the City of



Cathedral City expedited plans to build a connector pathway into the Dream Homes community. The segment was formally "adopted" by Renova Energy, Inc, which agreed to pay for the routine maintenance costs for the first three years. We've already got a list of local companies interested in funding the maintenance costs for future segments, the next of which will be built this summer in Palm Springs. Based on our progress in securing right of way and finalizing environmental work, I anticipate you'll be hearing additional construction updates throughout this coming year.

CV Link is at the core of CVAG's commitment to making our regional transportation network safer for cyclists and pedestrians, who are getting hit and killed at an alarming rate across the Coachella Valley. CVAG has worked diligently with the cities that had projects under the \$10 million Bike and Pedestrian Safety Improvement Program. The first project is substantially completed, and five more will be under construction this summer.

CVAG FY 2018/19 BUDGET - INTRODUCTION

At the same time, we're ensuring vehicular traffic moves smoothly on our arterials. In August, we celebrated the completion of our largest project to date – the Jefferson Street interchange on Interstate 10 – and created a new gateway to the City of Indio and to the entire eastern Coachella Valley. We've also collaborated with our cities on plans for future interchanges, including Portola Avenue in Palm Desert, Da Vall Road in Cathedral City, Avenue 50 in Coachella, as well as Jackson and Monroe Streets in Indio. In order to ensure we have balanced funding sources for projects like these, CVAG this year completed the Transportation Uniform Mitigation Fee (TUMF) Nexus Study. In coming months, we'll work with our member jurisdictions to implement the modest fee increase.

But we can't just build projects to handle future growth; we must be innovative and implement new technologies. This year, the CVAG Executive Committee approved the Regional Signal Synchronization Master Plan, which outlines a vision to efficiently move traffic across 70 regional arterials. The Executive Committee has prioritized the top 21 of these corridors, and fully funded Phase I of the project, which includes Highway 111, Ramon Road and Washington Street. The second phase of the project – the remaining 18 priority corridors – is partially funded and design and environmental work is under way in every jurisdiction in the Coachella Valley.



The overwhelming support for regional homelessness services has also allowed CVAG to expand the scope of CV Housing First, which is making an impact valleywide. The program is designed to comprehensively address homelessness by providing rapid rehousing opportunities, emergency rental assistance, crisis stabilization options and other supportive services. More than \$1.7 million has been committed to CV Housing First, thanks in large part to a dollar-for-dollar match from the Desert Healthcare

District/ Foundation. And early indications are that it is working: An independent analysis by HARC (Health Assessment and Research for Communities) presented in April showed 82.6% of those served exited to a permanent destination and “all because they completed the program as intended.” CVAG also sees continued success with the Alan Seman Bus Pass program, which helped 5,700 homeless or near homeless individuals get transportation to work, medical care, social care, social services and other vital services.

Collaboration has been critical to the successful implementation of the Coachella Valley Multiple Species Habitat Conservation Plan. Collectively, the Coachella Valley Conservation Commission (CVCC) and our land acquisition partners have conserved 92,495 acres since 1996, the baseline year for the Plan. Thanks to the increased precipitation and super bloom, the CVCC had a productive monitoring program in 2017, including the aeolian sand species, burrowing owl, desert tortoise, little San Bernardino Mountains linanthus, riparian birds, and triple-ribbed milkvetch. Most notably, the CVCC partnered in a massive cleanup effort that cleared 109 tons of trash and 240 tires from a large ravine in the Stubbe and Cottonwood Canyon Conservation Area on the southern border of Sand to Snow National Monument.

CVAG also launched Desert Community Energy, a Community Choice Aggregation program, in the cities of Palm Springs, Cathedral City and Palm Desert. The locally controlled power supply program, which starts in August, will work with Southern California Edison to bring customers

CVAG FY 2018/19 BUDGET - INTRODUCTION

electricity from renewable, carbon-free sources at competitive prices. The result is lower utility bills for consumers, an increased use of renewable energy as well as economic benefits and greenhouse gas reductions. CVAG is also helping customers reduce their costs through the continuation of Property Assessed Clean Energy (PACE) programs. To date, CVAG has service agreements with nine providers under four statewide programs. These programs have allowed property owners finance more than \$98.6 million worth of energy efficiency, water conservation, and renewable energy improvements to their residences and businesses.

This is just a glimpse of the work that the hardworking staff at CVAG has overseen for the region this year. I'm incredibly proud of their dedication to implementing programs that reflect CVAG's mission to improve transportation, conserve precious habitat, promote green energy solutions and provide social services to those who are less fortunate. And we've done all this while maintaining the strictest financial standards. The last unmodified audit opinion was presented to the Executive Committee in February and, yet again, the auditors did not detect any material weaknesses or significant deficiencies in internal controls. CVAG also created a new Audit Committee this year that furthers our commitment to transparency and will ensure our member jurisdictions have continued engagement and oversight of program budgets.

Tom Kirk, Executive Director
CVAG

CVAG FY 2018/19 BUDGET OVERVIEW

The following table compares the FY 2017/18 budget to the Proposed FY 2018/19 budget:

	FY 2017/18	FY 2018/19 Proposed	
	<u>Operating Budget</u>	<u>Operating Budget</u>	<u>% Change</u>
Operating Expenditures	\$899,882	\$990,181	10% Increase

Following is a condensed summary of Operating Expenditures.

REVENUES:

- ❖ Member Agency Contributions will reflect a total increase of \$13,400. As suggested by the jurisdictions, Member Agency Contributions should be increased on a yearly basis in line with the Consumer Price Index (CPI) for all items indexed (all urban consumers, Los Angeles-Riverside-Orange County from December to December) developed by the Bureau of Labor Statistics, United States Department of Labor. As such, for FY18/19, CVAG has increased the FY17/18 base contributions of \$385,047 by 3.6% or \$13,862. This increase was recommended by the Administrative/Personnel Committee in their meeting on March 26, 2018.
- ❖ Measure A /TUMF revenues provide for the Coachella Valley’s Transportation Program. CVAG is the Regional Transportation Planning Authority for the Coachella Valley, charged with all transportation planning and administration of a multi-million-dollar regional arterial construction program. As construction starts seems to be on a slightly up-tick, the TUMF revenues are projected at a 3% increase. Similarly, since the economy continues to be robust, CVAG also projects a 3% increase for the Measure A revenue.

1 The components of the FY 2018/19 Operating Budget are:

Administration (Fund 101, page 41)	\$ 640,677
Community Resources – Public Safety (Fund 101, page 33)	65,603
Community Resources – HCR Committee (Fund 101, page 33)	23,978
Community Resources – Homeless (Fund 101, page 33)	137,779
Energy & Environmental Resources – E&E Committee (Fund 101, page 38)	<u>122,144</u>
TOTAL	\$ 990,181

EXPENDITURES:

- ❖ **Staffing** is expected to increase by 2 positions, from 17 to 19 staff members. CVAG is the administrative arm for Desert Community Energy, a new Joint Powers Authority, and additional staffing is required to fulfill that commitment.
- ❖ The Personnel Committee (PC), at their March 26, 2018 meeting, supported the recommendation of a 3.0% cost of living increase.
- ❖ **Non-Personnel** costs are defined as all costs, EXCEPT Salaries and Benefits, Consultants, Construction/Project Costs and Debt Service. These non-personnel costs are either direct or indirect. Direct department non-personnel costs are requested by the department for a specific program such as consultants. Indirect costs include rent, utilities, and office supplies. These costs, along with administrative staff's salaries and benefits, are allocated to each department on a percentage basis.
- ❖ **Capital Project Summary** included in this document, is a listing of the major Capital Improvement Program projects scheduled for activity in FY 2018/19.

SIGNIFICANT EVENTS AND ACCOMPLISHMENTS

- ❖ Authorized the CVAG Executive Director to Fund Portion of Riverside Transportation Analysis Model (RIVTAM) Update at Cost not to Exceed \$25,000 over a 2-year period.
- ❖ Approved an Agreement for Right-of-Way Services with Riverside County Economic Development Agency (RivCoEDA) for CV Link at a Cost of \$157.69 per hour and Authorize the CVAG Executive Director and/or Legal Counsel to Make Minor Changes/Revisions for Clarification Purposes.
- ❖ Approved ten (10) Reimbursement Agreements for CVAG's 2017 Bicycle and Pedestrian Safety Program, and \$247,500 in additional funding for Signal Synchronization components in the City of Desert Hot Springs project.
- ❖ Authorize the CVAG Executive Director to recommend to Riverside County Transportation Commission 2018 State Transportation Improvement Program (STIP) Funding for 1) Ave. 66 Grade Separation Project; and 2) CV Link.
- ❖ Authorized the CVAG Executive Director to enter into a Cooperative Agreement with the City of Palm Springs in which CVAG would reimburse the additional costs associated with revising the Tahquitz Creek Levee Reconstruction Project to CV Link design standards.
- ❖ Participated in Caltrans' "Look Both Ways Public Safety Campaign" which brought awareness to the general public about bicycle and pedestrian safety via billboard advertising ads.

- ❖ Approved Amendment No. 3 to the Reimbursement Agreement with the City of Indio to Improve Highway 111 between Rubidoux Street and 760' west of Madison Street to increase CVAG's Regional Share of the project cost to \$6,933,335.49, an increase of \$1,863,355.49.
- ❖ Accepted a \$5.208 Million Award from the State's Active Transportation Program (ATP).
- ❖ Approved a Reimbursement Agreement with City of La Quinta for Intersection Improvements at Washington Street and Fred Waring Drive for Amount Not-to-Exceed \$1,395,555.
- ❖ Approved the Traffic Signal Interconnect Master Plan and corresponding Participating Agreement for the Regional Traffic Signal Synchronization Project.
- ❖ Authorized the CVAG Executive Director to take the necessary steps to allocate \$30 Million of Congestion Mitigation and Air Quality (CMAQ) funding for two projects; 1) \$27 Million the regional signal synchronization program; and, 2) \$3 Million for complementary Sunline quick bus and rideshare programs.
- ❖ Approved Amendment No. 1, a No-cost Change in Scope of Work for City of Cathedral City's Mid-Block Pedestrian Crossing Project Reimbursement Agreement related to CVAG's 2017 Bicycle and Pedestrian Safety Program.
- ❖ Approved a Reimbursement Agreement with City of Indio for the Avenue 50 and Jackson Street Intersection Project.
- ❖ Authorized the CVAG Executive Director to establish an "Adopt a Link" Program for CV Link and enter into a Cooperative Agreement with Renova Energy and any other parties to cover the first segment's Operations and Maintenance costs for three (3) years.
- ❖ Approved the 2018 Transportation Uniform Mitigation Fee Nexus Study.
- ❖ Approved an Environmental and Engineering Services Contract for Phase II with Advantec Engineering, Inc., for CVAG's Regional Signal Synchronization Project in the amount of \$3,983,141 plus, a 15% contingency of \$597,471, for a not-to-exceed total of \$4,580,612 and authorize the Executive Director to make clarifying changes/revisions prior to execution.
- ❖ Authorized the CVAG Executive Director to execute Amendment No. 5 to the contract with Alta Planning & Design, with a not-to-exceed amount of \$1,260,287 for additional planning and preliminary engineering design work for CV Link and authorize the Executive Director to make any changes/revisions for clarification purposes.
- ❖ Distributed SunLine Bus Passes to nine nonprofit organizations to provide transportation for more than 5,700 homeless or near homeless individuals to work, medical care, social

care, social services and other vital services. It resulted in 144 people obtaining housing, 289 people obtaining employment, and 76 people obtaining transportation.

- ❖ CVAG received over \$1.7 million from CV Housing First from six cities (Cathedral City, Coachella, Desert Hot Springs, Palm Springs, Palm Desert, La Quinta), Agua Caliente Band of Cahuilla Indians, the Desert Healthcare District/Foundation, and the County of Riverside. The total amount includes a matching contribution from Desert Healthcare District/Foundation for every city that contributed \$103,000 to the program.
- ❖ Launched CV Housing First contract with Path of Life Ministries with prevention, intervention and housing solutions for the homeless. In the first six (6) months, this program:
 - Ended homeless situations for 30 people in the Coachella Valley, 12 of them children and 5 of them Seniors, through leveraged Permanent Supportive Housing and Rapid Rehousing.
 - Prevented Homelessness utilizing CV Housing First Rental Assistance for 26 people in the Valley, 14 of them children and 5 of them Seniors.
 - Provided 1,191 shelter bed nights through Crisis Stabilization Housing for 13 people, 2 of them with serious medical needs and specialized equipment.
 - Connected 48 people experiencing homelessness and trauma to Path of Life's mobile Behavioral Health team.
 - Partnered 22 clients with their own Employment Support Navigator.
 - Over 400 unduplicated callers to the Coachella Valley Resource Hotline and 71 shelter diversions.
 - Established co-located offices in partnership with the County of Riverside Department of Public Social Services (DPSS) in the cities of Desert Hot Springs and Cathedral City.
- ❖ Held an Open House in March 2018 for the CV Housing First Main Office in the City of Palm Springs.
- ❖ Contracted with HARC, Inc. to evaluate CV Housing First effectiveness. In the first report of the evaluation of Homeless Management Information System (HMIS) data, HARC, Inc. found that 82.6% exited to a permanent destination, and all because they completed the program as intended.
- ❖ Expanded CV Housing First to include Emergency Response Outreach Teams, Housing, and a Special Needs Fund to assist in additional Homelessness Solutions.
- ❖ Formed Desert Community Energy joint powers authority to offer a Community Choice Energy program in the cities of Cathedral City, Palm Desert, and Palm Springs. Community Choice Energy offers benefits including competitive electricity rates, local control and consumer choice, and a cleaner, more efficient energy supply. The program works in partnership with Southern California Edison (SCE) which will continue to deliver power, maintain the grid, provide billing and other customer services. Desert Community Energy plans to start serving customers in August 2018, to provide electricity from renewable and carbon-free sources at competitive prices. Other cities served by SCE may choose to join in the future.

- ❖ Continued with nine PACE (Property Assessed Clean Energy) providers in the CVAG region, making it possible for property owners to finance energy efficiency, water conservation, and renewable energy improvements to residential, commercial and industrial property. CVAG provides oversight with standardized consumer protection policies and coordination on behalf of member agencies. Total PACE activity for all providers totaled \$98.6 million.
- ❖ Continued support for restoration of the Salton Sea, including a resolution of support for full funding of the Salton Sea Management Program Phase 1 10-year plan.
- ❖ The Coachella Valley Conservation Commission acquired over 9,872 acres of desert habitat conservation lands since 2008 through the Coachella Valley Multiple Species Habitat Conservation Plan. These conservation lands provide important habitat conservation and also help smooth the way for key infrastructure projects, including regional roads and water facilities. Since 1996, approximately 92,495 acres have been acquired by the Coachella Valley Conservation Commission together with local, state and federal partners to meet the conservation goals and objectives of this visionary plan.
- ❖ The Coachella Valley Conservation Commission completed clean-up, fencing and signage on conservation lands to reduce illegal trespass and dumping. CVCC partnered in a massive cleanup effort that cleared 109 tons of trash and 240 tires from a large ravine in the Stubbe and Cottonwood Canyon Conservation Area on the southern border of Sand to Snow National Monument. Throughout the conservation areas, nearly 8 tons of refuse and 55 tires were cleaned up from more than 1,293 acres of land, providing over \$13,900 to local contractors for clean-up services.
- ❖ Continued the online courses to educate landscape professionals about best practices in water efficient irrigation and air quality-focused overseeding alternatives. These courses are offered in partnership with Coachella Valley Water District (CVWD) and College of the Desert as part of a Landscaper Certification program. An update was completed this year to provide for tracking of landscaper participation and to make this information available to member agencies. The course is provided free to participants. All valley cities approved an amended ordinance which requires the water efficiency course as a prerequisite to obtaining a business license.
- ❖ Collected more than 1,200 used oil filters and recycled about 1,500 gallons of used motor oil through CVAG's Used Oil Filter Exchange Events in the Coachella and Palo Verde Valleys. CVAG involves elementary school students by hosting an annual used oil poster drawing contest. Over 100 drawings are submitted annually. The winners receive prizes and are recognized at one of the used oil recycling events. The first-place winner is honored by the CVAG Executive Committee representing mayors of all participating cities.
- ❖ Showcased CVAG member jurisdictions leadership in sustainability through the Desert Cities Energy Partnership, with energy efficient city halls, solar powered facilities, LEED certified buildings, and alternative transportation programs. In partnership with the City of Palm Springs Sustainability Commission, a Zero Net Energy Shoptalk workshop was held at UCR Palm Desert in November 2017. The partnership works with member

agencies to encourage energy efficiency projects which also offer cost savings and improve comfort in facilities.

- ❖ The Regional PM10 Street Sweeping Program to control PM10 by regular sweeping of regional arterials continued under a contract with M&M Sweeping. Funding for this program has come from various sources including AQMD's Mobile Source Air Pollution Reduction Review Committee's (MSRC) Local Government Match Grant Program, Riverside County's Coachella Valley Air Quality Enhancement Program, and AB 2766 funds. Alternative funding sources are being sought as the MSRC funding is not currently available.
- ❖ The establishment of the CVAG Audit Committee that will meet with the auditors prior to the start of the annual audit further improving transparency and allowing for additional review of particular projects upon the recommendation of the Audit Committee.

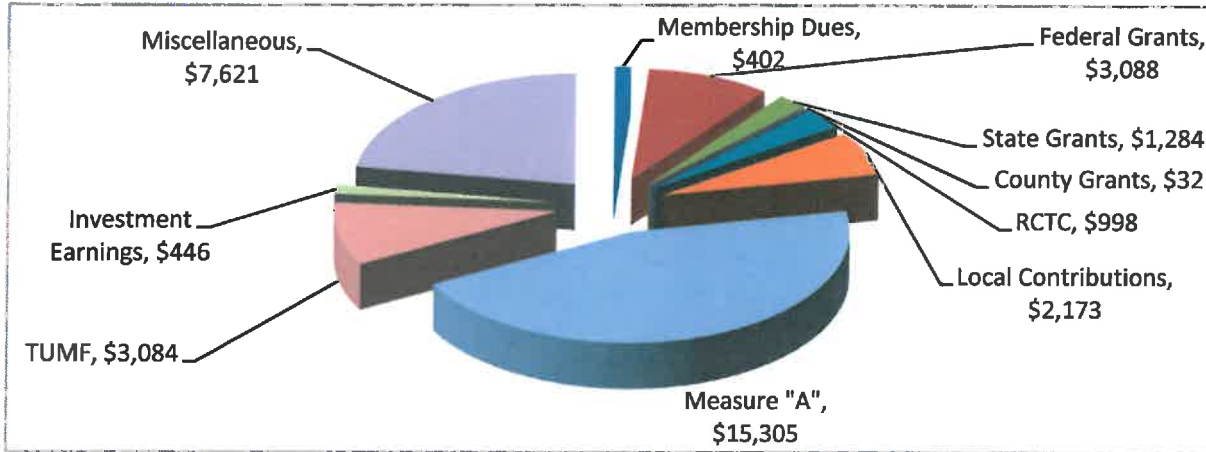
FUTURE ACTIVITIES

- ❖ Complete the update of Transportation Uniform Mitigation Fee (TUMF) Manual.
- ❖ Secure final approval of, and execute a contract for, regional street sweeping to include special impact (wind impacted) streets.
- ❖ Complete environmental studies on Phase I of the Regional Signal Synchronization Project and begin construction on the first three corridors (Highway 111, Ramon Road and Washington Street).
- ❖ Complete environmental studies on Phase II of the Regional Signal Synchronization Project and begin construction on the next eighteen corridors.
- ❖ Monitor transportation related cash flows.
- ❖ Assist Western Riverside County Council of Governments (WRCOG) to complete the update the traffic model for Riverside County (RIVTAM).
- ❖ Continue coordination with the Riverside County Transportation Commission (RCTC) on passenger rail service to, and other regional transportation projects in, the Coachella Valley.
- ❖ Continue development of multiple CVAG funded regional transportation projects.
- ❖ Continue to monitor funding cycles (ATP, STIP, Etc.) and apply for grants to fund regional transportation projects (ATP, CV Link, Signal Synchronization, Arterials, Bridges, Grade Separations and Interchanges) in the Coachella Valley.
- ❖ Complete the environmental process (NEPA) for CV Link.

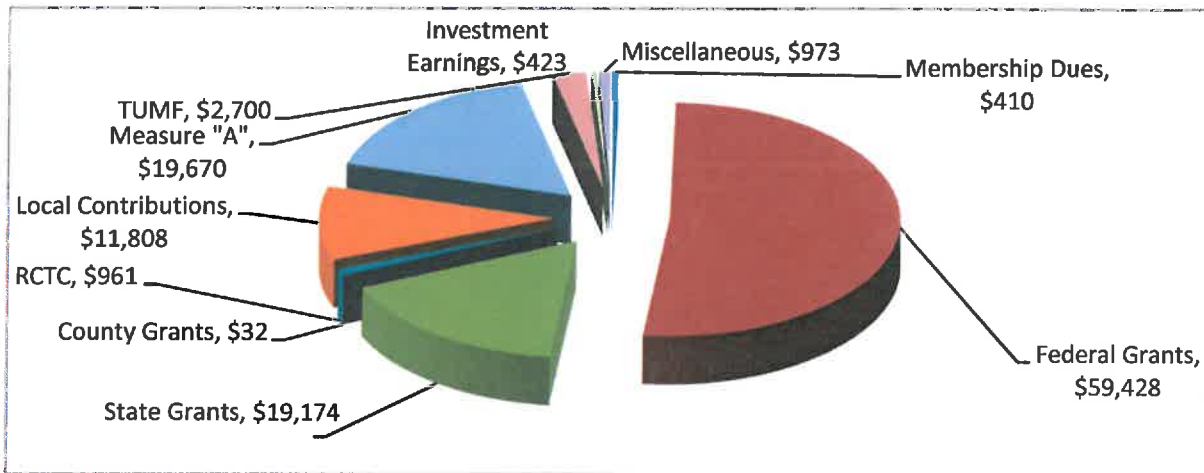
- ❖ Continue the acquisition of Right-of-Way (easements, license agreements) for CV Link construction.
- ❖ Complete final design of CV Link and secure approval of a construction contract to start construction additional segments of CV Link.
- ❖ Continue to coordinate with Caltrans, Southern California Association of Governments (SCAG) and Riverside County Transportation Commission (RCTC) relative to implementation of the Regional and Federal transportation improvement plans (RTIP, FTIP).
- ❖ Coordinate regional street sweeping schedule conformance and quality.
- ❖ Launch the Desert Community Energy community choice energy program in August 2018 to provide competitive electricity rates, cleaner sources of energy, and local control of energy choices.
- ❖ Promote regional Property Assessed Clean Energy programs; monitor and report on progress and results.
- ❖ Continue the annual Energy Summit, highlighting renewable energy, energy efficiency, and green job opportunities.
- ❖ Continue to provide support to the Coachella Valley Conservation Commission for implementation of the Coachella Valley Multiple Species Habitat Conservation Plan.
- ❖ Support regional efforts to restore and revitalize the Salton Sea.
- ❖ Continue to promote regional efforts on water conservation, in coordination with water districts and member agencies.

Under this Budget, CVAG will be maintaining a reserve of approximately one and a half times the anticipated annual operating expenses to be prudent. The projected Operating Budget for FY 2018/19 is \$990,181 while the General Fund Unassigned Fund Balance on June 30, 2019 is projected to be \$1,663,068.

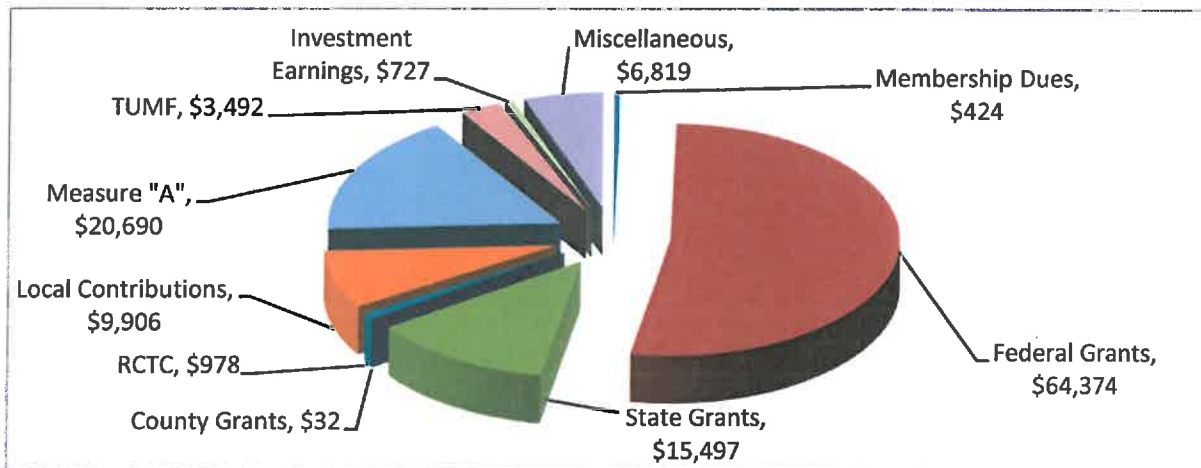
**ACTUAL REVENUES
FY 2016/17
\$33,903 ('000)**



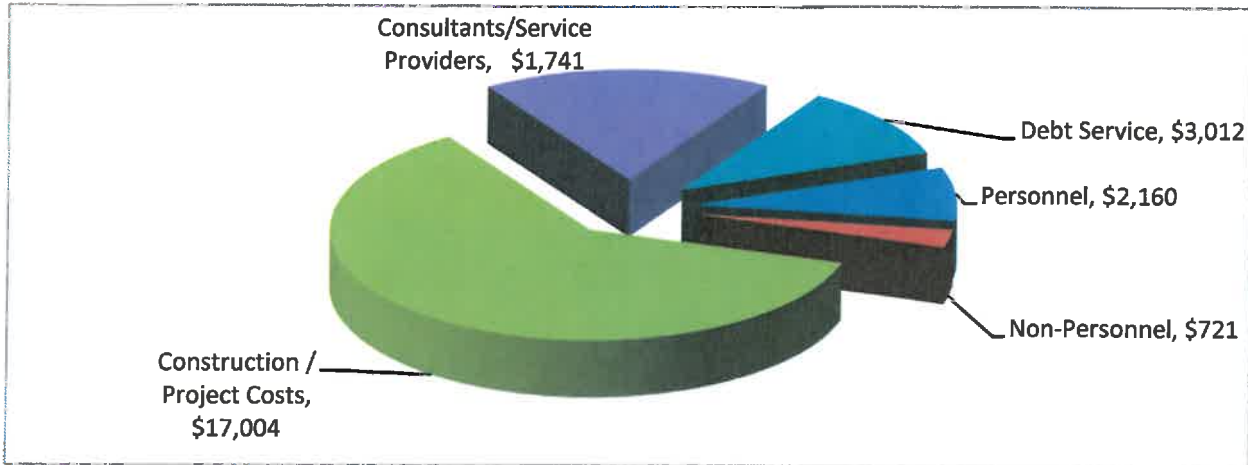
**BUDGETED REVENUES
FY 2017/18
\$115,579 ('000)**



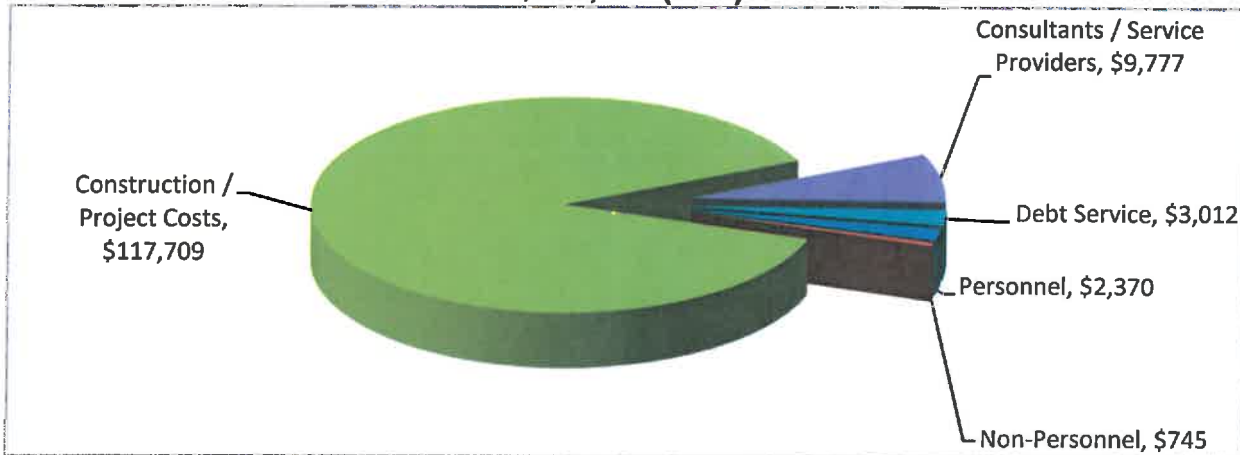
**ESTIMATED REVENUES
FY 2018/19
\$12,939 ('000)**



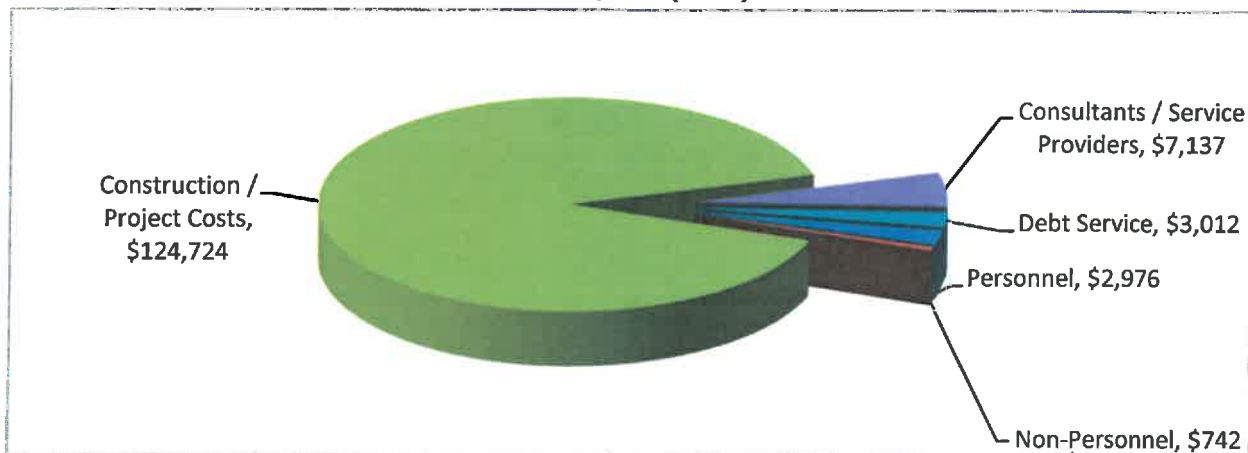
**ACTUAL EXPENDITURES
FY 2016/2017
\$27,868 ('000)**



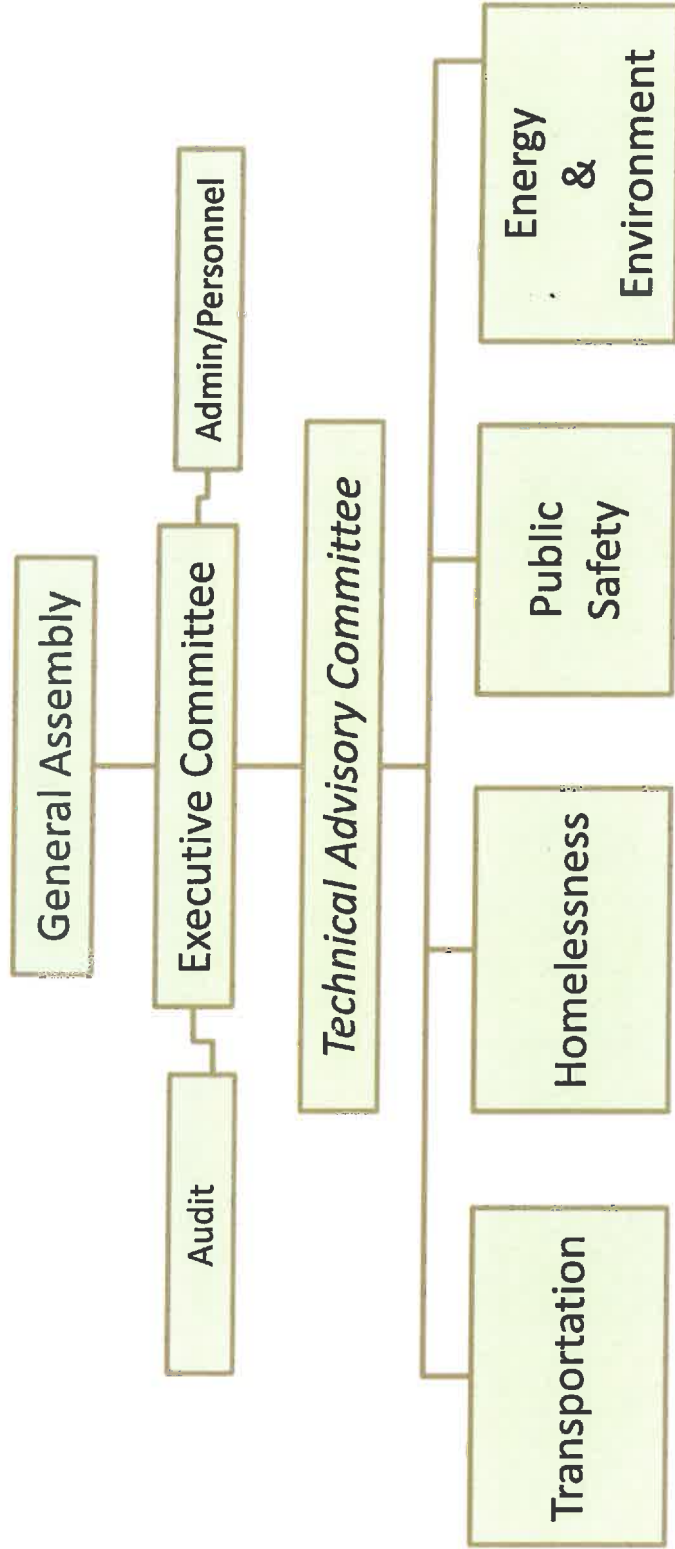
**BUDGETED EXPENDITURES
FY 2017/2018
\$133,613 ('000)**



**PROPOSED EXPENDITURES
FY 2018/2019
\$138,591 ('000)**



**COACHELLA VALLEY ASSOCIATION OF GOVERNMENTS
 POLICY COMMITTEE STRUCTURE CHART
 FY 2018/2019**



**COACHELLA VALLEY ASSOCIATION OF GOVERNMENTS
FY 2018/2019
MEMBERSHIP DUES ASSESSMENTS**

JURISDICTION	JAN. 2016 POPULATION	% of TOTAL	POPULATION ASSESSMENT	ASSESSED VALUE	% of TOTAL	AV ASSESSMENT	2018/19 ASSESSMENT	2017/18 ASSESSMENT	Increase \$ Change
BLTYHE	13,107	2.98%	\$ 5,944	\$ 905,392,599	1.17%	\$ 2,334	\$ 8,278	\$ 8,509	\$ (231)
CATHEDRAL CITY	54,557	12.42%	\$ 24,772	\$ 4,287,524,921	5.54%	\$ 11,050	\$ 35,822	\$ 34,327	\$ 1,495
COACHELLA	45,551	10.37%	\$ 20,683	\$ 1,769,959,318	2.29%	\$ 4,567	\$ 25,250	\$ 23,969	\$ 1,281
DESERT HOT SPRINGS	29,111	6.63%	\$ 13,224	\$ 1,607,742,525	2.08%	\$ 4,149	\$ 17,373	\$ 16,403	\$ 970
INDIAN WELLS	5,450	1.24%	\$ 2,473	\$ 5,544,637,858	7.16%	\$ 14,281	\$ 16,754	\$ 16,461	\$ 293
INDIO	88,718	20.19%	\$ 40,270	\$ 7,944,446,119	10.26%	\$ 20,464	\$ 60,734	\$ 57,429	\$ 3,305
LA QUINTA	40,677	9.26%	\$ 18,470	\$ 12,867,519,997	16.63%	\$ 33,169	\$ 51,639	\$ 50,230	\$ 1,409
PALM DESERT	50,740	11.55%	\$ 23,037	\$ 14,379,746,976	18.58%	\$ 37,059	\$ 60,096	\$ 60,029	\$ 67
PALM SPRINGS	47,379	10.78%	\$ 21,501	\$ 12,161,876,652	15.71%	\$ 31,334	\$ 52,835	\$ 49,767	\$ 3,068
RANCHO MIRAGE	18,295	4.16%	\$ 8,297	\$ 8,342,085,710	10.78%	\$ 21,501	\$ 29,798	\$ 29,494	\$ 304
RIVERSIDE COUNTY - CVAG BOUNDARIES	45,799	10.42%	\$ 20,783	\$ 7,581,060,349	9.80%	\$ 19,546	\$ 40,329	\$ 38,428	\$ 1,901
AGUA CALIENTE BAND OF CAHUILLA INDIANS	-	-	-	-	-	-	\$ 8,278	\$ 8,509	\$ (231)
CABAZON BAND OF MISSION INDIANS	-	-	-	-	-	-	\$ 8,278	\$ 8,509	\$ (231)
TOTALS	439,384	100.00%	\$ 199,454	\$ 77,391,993,024	100.00%	\$ 198,454	\$ 415,464	\$ 402,064	\$ 13,400

POPULATION SOURCE:

Cities:

County:

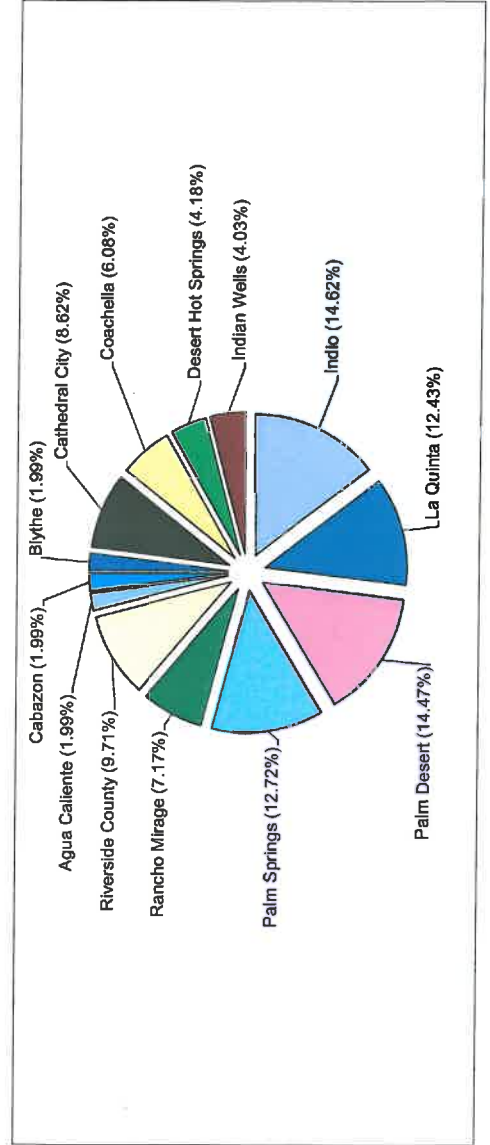
Assessed Valuations:

Demographic Research Unit, Department of Finance, State of California as of January 2017.

U.S. Census increased/(decreased) by an average increase/decrease for the C.V. Cities and Blythe, 0.92% in 2015-1.75% in 2016 and 0.97% in 2017. Population in the County of Riverside increased by 1.57% as of January 1, 2017.

Riverside County 2017/18 Assessed Valuation Report.

The total assessed valuation for the Coachella Valley Unified, Desert Sands Unified and Palm Springs Unified School Districts for FY 2017/18 was \$76,486,600,425. CVAG's boundaries are the same as the boundaries of the above school districts within Riverside County's boundaries. Riverside County's share of that assessed valuation was calculated by subtracting the assessed valuation of all those cities within those school district boundaries which totals \$68,905,540,076. This leaves \$7,581,060,349 for the County of Riverside's assessed valuation in the Coachella Valley. These values use the Local Roll which does not include the State Assessed (SBE) Properties.



**CAPITAL PROJECT - FIVE YEAR SUMMARY
(PROJECT/FUNDING APPROVED BY EXECUTIVE COMMITTEE FOR CONSTRUCTION)
FISCAL YEAR 2018/2019**

<u>TRANSPORTATION</u>	FY 2018/19	FY 2019/20	FY 2020/21	FY 2021/22	FY 2022/23
Madison Street from Avenue 52 to Indio Boulevard Phase 2 Under Construction Lead Agency: City of Indio Funded from Regional / Local Fund Sources	\$ 4,666,667	\$ 1,333,333			
Jefferson Street Interchange @ Interstate 10 Final checklist tasks Lead Agency: County of Riverside Funded from STIP / STP / Regional / Local Fund Sources	\$ 1,250,000				
Indian Canyon from Garnet Avenue to/Including Railroad Crossing Bridge Advise for bid, begin construction in late 2015 Lead Agency: City of Palm Springs Funded from STIP / HBRR / Regional / Local Fund Sources	\$ 7,878,373	\$ 5,083,345	\$ 1,270,836		
Cathedral Canyon Drive Bridge over WWR Design Lead Agency: City of Cathedral City Funded from HBP / Regional / Local Fund Sources	\$ 7,555,939				
Date Palm Drive Bridge over WWR Under Construction Lead Agency: City of Cathedral City Funded from HBP / Regional / Local Fund Sources	\$ 2,324,906				
Avenue 66 Grade Separation over UPRR Right of Way, PS&E Lead Agency: County of Riverside Funded from Regional / Local Fund Sources	\$ 3,333,333	\$ 7,446,740	\$ 466,667		
Frank Sinatra Bridge over WWR PS&E Lead Agency: City of Rancho Mirage Funded from HBP / Regional / Local Fund Sources	\$ 13,949,434	\$ 11,618,891	\$ 1,162,453		
Ramon Road Bridge Widening over WWR Right of Way Lead Agency: City of Palm Springs Funded from HBP / Regional / Local Fund Sources	\$ 4,459,890	\$ 14,997,445	\$ 11,149,724	\$ 445,988	
Vista Chino Bridge over WWR PS&E Lead Agency: City of Palm Springs Funded from HBP / Regional / Local Fund Sources	\$ 8,718,396	\$ 17,436,792	\$ 29,061,319	\$ 30,203,290	\$ 5,812,264

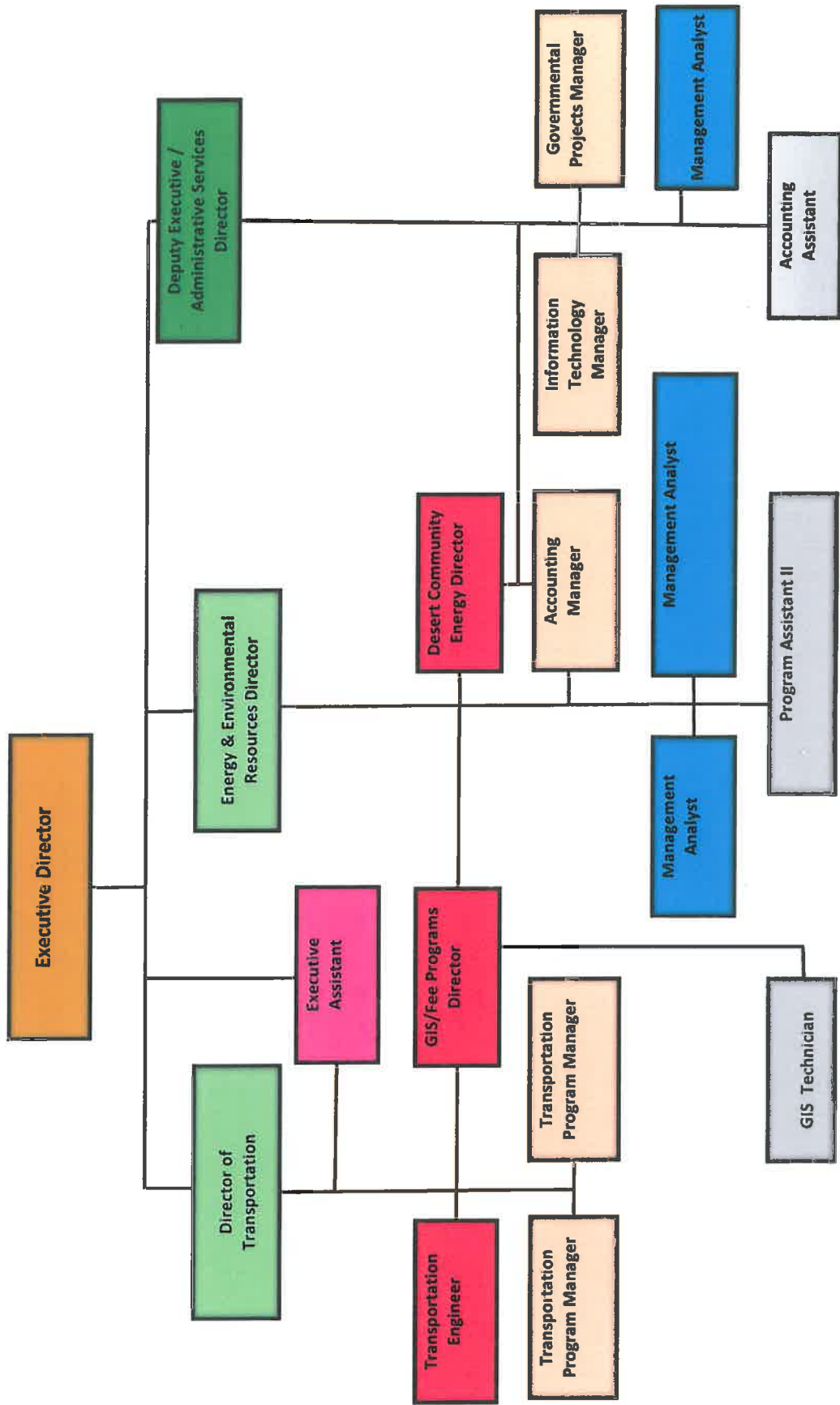
TRANSPORTATION

	FY 2018/19	FY 2019/20	FY 2020/21	FY 2021/22	FY 2022/23
SR-111 (between Rubidoux St. & 760' West of Madison) Under Construction Lead Agency: City of Indio Funded from Regional / Local Fund Sources	\$ 2,666,667	\$ 666,667			
South Palm Canyon Bridge over Tahquitz Creek PS&E Lead Agency: City of Palm Springs Funded from HBP / Regional / Local Fund Sources	\$ 929,961	\$ 929,961	\$ 5,531,526	\$ 232,490	
East Palm Canyon Bridge over Palm Canyon Wash PS&E Lead Agency: City of Palm Springs Funded from HBP / Regional / Local Fund Sources	\$ 685,112	\$ 856,390	\$ 5,615,377	\$ 856,390	\$ 428,195
Dune Palms Bridge over WWR Preliminary Engineering Lead Agency: City of La Quinta Funded from HBP / Regional / Local Fund Sources	\$ 9,694,825	\$ 2,967,201			
Avenue 50 Bridge over WWR Design Lead Agency: City of Coachella Funded from HBP / SAFETEA-LU / Regional / Local Fund Sources	\$ 1,410,458	\$ 211,840			
Interchange Improvement (I-10 and Avenue 50) Design Lead Agency: City of Coachella Funded from Regional / Local Fund Sources	\$ 133,333				
Avenue 48 (between Jackson Street and Van Buren Street) Right of Way Lead Agency: City of Coachella Funded from STP / Regional / Local Fund Sources	\$ 363,086				
Avenue 50 (between Calhoun Street and Harrison Street) Design Lead Agency: City of Coachella Funded from Regional / Local Fund Sources	\$ 3,033,333	\$ 133,333			
Jackson Street Signal Improvement Under Construction Lead Agency: City of Indio Funded from Regional / Local Fund Sources	\$ 747,366				
Avenue 44 Bridge over WWR PS&E Lead Agency: City of Indio Funded from HBP / Regional / Local Fund Sources	\$ 4,649,813	\$ 6,753,679	\$ 581,227		

TRANSPORTATION

	FY 2018/19	FY 2019/20	FY 2020/21	FY 2021/22	FY 2022/23
Washington St./Fred Waring Dr. Intersection Improvements Design Lead Agency: Funded from Regional / Local Fund Sources	\$ 1,727,412				
Avenue 50 (SR86 to I-10) PAED & PS&E Lead Agency: City of Coachella Funded from Regional / Local Fund Sources	\$ 737,467				
Date Palm Drive (I-10 and Varner) Under Construction Lead Agency: City of Cathedral City Funded from Regional / Local Fund Sources			\$ 1,248,577	\$ 1,248,579	
North Indian Canyon Drive Widening PS&E Lead Agency: County of Riverside Funded from Regional / Local Fund Sources	\$ 2,533,333	\$ 666,667			
Portola Avenue / I-10 Interchange Design Lead Agency: County of Riverside Funded from Regional / Local Fund Sources	\$ 4,000,000	\$ 13,333,333	\$ 40,100,000	\$ 7,333,333	\$ 3,333,333
Bicycle & Pedestrian Safety Program Design & one project under construction Lead Agency: Various Funded from Regional / Local Fund Sources	\$ 4,000,000	\$ 482,884			
Interchange Preparation Fund Design Lead Agency: Various Funded from Regional / Local Fund Sources	\$ 2,000,000	\$ 1,600,000	\$ 600,000		
Varner Road Improvement (Ramon Road to Monterey) Completed (Future Reimbursement) Lead Agency: County Funded from Regional / Local Fund Sources				\$ 2,494,343	
Portola Avenue (North of Gerald Ford Drive) Completed (Future Reimbursement) Lead Agency: City of Palm Desert Funded from Regional / Local Fund Sources				\$ 2,139,739	
TOTAL	\$ 93,449,104	\$ 86,518,501	\$ 96,787,706	\$ 44,954,152	\$ 9,573,792

CVAG Staff Organization Chart FY 2018/2019



FISCAL OVERVIEW

This section of the document presents the financial overview of CVAG's proposed Operating Budgets. It compares expenditures with available resources.

FUND SUMMARY

The Fund Summary Report provides an overview of the financial activities anticipated in each fund through the proposed fiscal year.

OVERALL AGENCYWIDE SUMMARY

The Overall Agencywide Summary Report provides a summary of the FY 2018/19 proposed budget. In addition, the Report compares the proposed budget with the year-end revenue and expenditure estimates for FY 2017/18, the adopted budget for FY 2017/18 and the audited financial statements for FY 2016/17.

BUDGET BY PROGRAMS

The Budget By Programs Report provides an overview of the financial activities anticipated in each program for FY 2018/19.

FUND SUMMARY - FY 2018/2019

	Fund	Est. Beg. Fund Balance	Estimated Revenues	Estimated Expenditures	Transfer In	Transfer Out	Est. End. Fund Bal.
101	General Fund	\$ 1,870,094	\$ 463,837	\$ (939,186)	\$ 545,673	\$ (53,596)	\$ 1,886,822
202/206	Energy Partnership	139,854	110,100	(89,769)	-	(15,437)	\$ 144,748
203	Aerial Photography/Events	15,015	-	-	-	-	\$ 15,015
204/205	Bus Passes / Homeless	844,923	903,711	(1,524,715)	-	-	\$ 223,919
207	Tire Amnesty	-	-	(37,653)	40,158	(2,505)	\$ -
210	Desert Community Energy	(314,690)	984,200	(566,563)	-	(102,947)	\$ -
301	AB2766	49,932	415,110	(32,781)	-	(432,261)	\$ -
321	Used Oil Recycling	36,264	87,979	(103,992)	3,171	(3,171)	\$ 20,251
411	SCAG	-	-	(3,969)	4,459	(490)	\$ -
501	AB939	78,680	32,360	(24,321)	-	(47,219)	\$ 39,500
601	TUMF / Transportation Administration	290,189	4,306,674	(3,883,505)	-	(73,516)	\$ 639,842
611	Measure A	32,998,073	82,405,717	(94,141,521)	-	(3,856,922)	\$ 17,405,347
612/624	LTF/ PPM & Signal Synchronization	616,770	6,541,825	(9,881,517)	3,744,924	(391,715)	\$ 630,287
618/626	CV Link	-	25,833,000	(26,151,576)	372,722	(54,146)	\$ -
631/632/634	MSHCP	42,377	689,461	(585,118)	-	(104,343)	\$ 42,377
702	Regional Street Sweeping	548,178	164,691	(619,583)	427,936	(2,886)	\$ 518,336
711	COLMAC	3,007	20	(5,138)	2,601	(490)	\$ -
	Total	\$ 37,218,666	\$ 122,938,685	\$ (138,590,907)	\$ 5,141,644	\$ (5,141,644)	\$ 21,566,444

OVERALL AGENCYWIDE SUMMARY

	FY2016/17	FY2017/18	FY2017/18	FY2018/19
	Actual	Budget	Yr. End Est.	Budget
BEGINNING FUND BALANCE	\$ 51,798,021	\$ 58,109,660	\$ 57,833,005	\$ 37,218,666
REVENUES:				
1001 Member Agency Contributions	\$ 401,884	\$ 409,918	\$ 409,918	\$ 423,617
3001 AB2766	391,551	441,645	406,216	414,340
3021 Used Oil Grant	74,418	74,000	87,639	87,639
3031 MSRC	-	125,000	250,000	-
5001 AB939	31,860	31,860	31,860	31,860
5012 Air Quality Enhancement / COLMAC	150,000	159,880	150,000	150,000
6001 Measure "A"	14,582,793	19,000,000	19,407,690	19,989,920
6011 Meas. "A" In Lieu	722,253	670,000	705,421	700,000
6012 TUMF	3,083,965	2,700,000	3,390,020	3,491,720
6025 Local Repayments - Transportation	904,010	568,595	586,925	592,541
6032 RCTC - Admin. Reimbursements	510,832	530,000	548,427	550,000
6042 RCTC - PP&M	105,131	35,000	73,661	5,000
6051 RCTC - LTF	382,500	396,000	396,000	423,000
7001 MSHCP / CVCC	687,216	695,357	604,757	689,461
7005 Energy Conservation Funding	269,407	250,000	152,763	1,084,200
7010 Homeless Funding	1,158,711	885,737	1,752,700	898,711
VAR Other Transportation Funding	5,399,487	79,635,228	81,385,762	60,687,396
7031 Other Revenue	4,600,842	8,548,000	5,527,745	31,992,516
8001 Investment Income	445,781	422,930	707,261	726,764
Total Revenues	\$ 33,902,641	\$ 115,579,150	\$ 116,574,765	\$ 122,938,685
EXPENDITURES:				
Personnel				
1101 Salaries	\$ 1,620,019	\$ 1,777,545	\$ 1,649,543	\$ 2,177,434
1103 Auto Allowance	7,200	7,200	7,200	7,200
1211 PERS	221,669	211,112	243,297	362,737
1213 Medicare / FICA	26,022	28,976	25,848	34,765
1221 Group Insurance	260,487	310,100	242,892	352,116
1226 Unemployment	3,450	5,474	1,095	6,760
1231 State Compensation	11,485	18,348	17,260	22,555
1241 Long Term Disability	6,815	8,234	7,188	9,606
1261 Deferred Compensation	2,936	2,936	2,936	2,935
Total Personnel Expenditures	\$ 2,160,083	\$ 2,369,925	\$ 2,197,259	\$ 2,976,108

OVERALL AGENCYWIDE SUMMARY (CONTINUED)

	FY2016/17 Actual	FY2017/18 Budget	FY2017/18 Yr. End Est.	FY2018/19 Budget
Non-Personnel				
2321 Communications / Phone	\$ 17,145	\$ 19,140	\$ 19,151	\$ 21,640
2341 Advertising	9,173	15,000	9,303	14,500
2353 Comprehensive Insurance	84,125	100,300	104,831	115,015
2401 Memberships / Registration	3,473	6,000	5,866	6,000
2415 Postage	1,745	4,000	1,632	4,000
2417 General Expense	4,798	11,000	4,661	11,000
2418 Per Diem Payments	26,075	43,750	27,599	46,000
2421 Subscriptions	414	2,400	104	2,400
2422 Computer Software	35,182	42,000	36,405	42,300
2423 Office Supplies	2,817	10,000	7,423	10,000
2425 Legal Services	162,663	110,000	85,335	90,000
2427 Medical Services	-	500	31	700
2428 Accounting Services	28,167	34,000	37,300	36,000
2431 Professional Services	20,127	41,400	26,864	24,000
2451 Equipment Lease / Maintenance	5,708	7,000	10,718	11,000
2461 Building Lease / Rent	106,212	135,000	116,415	134,960
2481 Printing	4,745	7,000	11,180	8,000
2484 Resource Materials	2,915	4,000	2,008	4,000
2485 Training - Employee	8,871	23,000	9,124	25,500
2502 Local Meetings	14,754	13,000	9,110	11,750
2503 Travel and Training	9,571	10,000	12,305	12,000
2512 Utilities	9,029	25,000	13,280	15,000
2601 Community Forums/CVAG Conf.	20,042	18,000	39,103	21,000
4821 Equipment/Improvements	143,199	64,000	19,347	75,000
Total Non-Personnel Expenditures	\$ 720,950	\$ 745,490	\$ 609,095	\$ 741,765
Other				
2432 Consultants / Service Providers	\$ 4,971,023	\$ 9,776,737	\$ 3,533,987	\$ 7,136,612
2433 Construction / Project Costs	17,003,368	117,708,481	127,836,530	124,724,189
8981 Debt Service	3,012,233	3,012,233	3,012,233	3,012,233
3500 Operating Transfers Out	796,010	980,138	1,290,876	5,141,644
9000 Operating Transfers In	(796,010)	(980,138)	(1,290,876)	(5,141,644)
Total Other	\$ 24,986,624	\$ 130,497,451	\$ 134,382,750	\$ 134,873,034
Total Personnel/Non-Personnel/Other	\$ 27,867,657	\$ 133,612,866	\$ 137,189,104	\$ 138,590,907
Net Excess (Deficit)	\$ 6,034,984	\$ (18,033,716)	\$ (20,614,339)	\$ (15,652,222)
ENDING FUND BALANCE	\$ 57,833,005	\$ 40,075,944	\$ 37,218,666	\$ 21,566,444

BUDGET BY PROGRAMS - FY 2018/2019

	TRANSPORTATION	COMMUNITY RESOURCES	ENERGY AND ENVIRONMENTAL RESOURCES	ADMINISTRATION	TOTAL
BEGINNING FUND BALANCE	\$ 33,905,032	\$ 1,446,040	\$ (2,500)	\$ 1,870,094	\$ 37,218,666
REVENUES:					
1001 Member Agency Contributions	-	\$ 227,360	\$ 122,144	\$ 74,113	\$ 423,617
3001 AB2766	-	414,340	-	-	414,340
3021 Used Oil Grant	-	-	87,639	-	87,639
3031 MSRC	-	-	-	-	-
5001 AB939	-	-	31,860	-	31,860
5012 Air Quality Enhancement / COLMAC	-	150,000	-	-	150,000
6001 Measure "A"	19,989,920	-	-	-	19,989,920
6011 Meas. "A" In Lieu	700,000	-	-	-	700,000
6012 TUMF	3,491,720	-	-	-	3,491,720
6025 Local Repayments - Transportation	592,541	-	-	-	592,541
6032 RTC - Admin. Reimbursement	550,000	-	-	-	550,000
6042 RTC - PP&M	5,000	-	-	-	5,000
6051 RTC - LTF	423,000	-	-	-	423,000
7001 MSHCP / CVCC	-	-	689,461	-	689,461
7005 Energy Conservation Funding	-	-	1,084,200	-	1,084,200
7010 Homeless Funding	-	898,711	-	-	898,711
7031 Other Transportation Funding	60,687,396	-	-	-	60,687,396
7031 Other Revenue	31,946,825	14,691	10,000	21,000	31,992,516
8001 Investment Income	700,814	5,790	940	19,220	726,764
Total Revenues	\$ 119,087,216	\$ 1,710,892	\$ 2,026,244	\$ 114,333	\$ 122,938,685
EXPENDITURES:					
Personnel					
1101 Salaries	859,095	\$ 134,333	\$ 847,963	\$ 336,043	\$ 2,177,434
1103 Auto Allowance	3,384	504	2,592	720	7,200
1211 PERS	121,095	16,406	167,371	57,865	362,737
1213 Medicare	13,000	3,100	12,751	5,914	34,765
1221 Group Insurance	124,708	31,411	140,006	55,991	352,116
1226 Unemployment	2,668	417	2,632	1,043	6,760
1231 State Compensation	8,900	1,394	8,781	3,480	22,555
1241 Long Term Disability	3,791	594	3,739	1,482	9,606
1261 Deferred Compensation	1,380	205	1,056	294	2,935
Total Personnel Expenditures	\$ 1,138,021	\$ 188,364	\$ 1,186,891	\$ 462,832	\$ 2,976,108

BUDGET BY PROGRAMS - FY 2018/2019 (CONTINUED)

	TRANSPORTATION	COMMUNITY RESOURCES	ENERGY AND ENVIRONMENTAL RESOURCES	ADMINISTRATION	TOTAL
Non-Personnel					
2321 Communications / Phone	\$ 8,145	\$ 1,277	\$ 9,034	\$ 3,184	\$ 21,640
2341 Advertising	3,395	63	10,888	154	14,500
2353 Comprehensive Insurance	43,407	11,813	42,822	16,973	115,015
2401 Memberships / Registration	5,395	63	388	154	6,000
2415 Postage	1,588	786	1,396	230	4,000
2417 General Expense	4,341	681	4,281	1,697	11,000
2418 Per Diem Payments	7,200	19,200	6,000	13,600	46,000
2421 Subscriptions	947	149	934	370	2,400
2422 Computer Software	18,014	1,636	18,081	4,569	42,300
2423 Office Supplies	4,298	1,289	3,319	1,094	10,000
2425 Legal Services	71,313	3,489	12,729	2,469	90,000
2427 Medical Services	200	-	200	300	700
2428 Accounting Services	14,994	2,349	14,794	3,863	36,000
2431 Professional Services	11,975	3,311	2,942	5,772	24,000
2451 Equipment Lease / Maintenance	4,341	681	4,281	1,697	11,000
2461 Building Lease / Rent	53,233	8,345	52,551	20,831	134,960
2481 Printing	1,698	231	4,994	1,077	8,000
2484 Resource Materials	1,579	248	1,556	617	4,000
2485 Training - Employee	10,062	1,576	9,927	3,935	25,500
2502 Local Meetings	4,986	1,239	4,553	972	11,750
2503 Travel and Training	5,686	1,089	4,253	972	12,000
2512 Utilities	5,921	929	5,835	2,315	15,000
2601 Community Forums/CVAG Conf.	-	-	-	21,000	21,000
4821 Equipment/Improvements	5,000	-	-	70,000	75,000
Total Non-Personnel Expenditures	\$ 287,718	\$ 60,444	\$ 215,758	\$ 177,845	\$ 741,765
Other					
2432 Consultants / Service Providers	\$ 5,550,612	\$ 1,505,000	\$ 81,000	\$ -	\$ 7,136,612
2433 Construction / Project Costs	124,073,504	623,685	27,000	-	124,724,189
8981 Debt Service	3,012,233	-	-	-	3,012,233
3500 Operating Transfers Out	4,376,789	467,721	294,533	2,601	5,141,644
9000 Operating Transfers In	(4,122,105)	(430,537)	(43,329)	(545,673)	(5,141,644)
Total Non-Personnel Expenditures	\$ 132,891,033	\$ 2,165,869	\$ 359,204	\$ (543,072)	\$ 134,873,034
Total Personnel/Non-Personnel/Other	\$ 134,316,772	\$ 2,414,677	\$ 1,761,853	\$ 97,605	\$ 138,590,907
Net Excess (Deficit)	\$ (15,229,556)	\$ (703,785)	\$ 264,391	\$ 16,728	\$ (15,652,222)
ENDING FUND BALANCE	\$ 18,675,476	\$ 742,255	\$ 261,891	\$ 1,886,822	\$ 21,566,444

PROGRAM BUDGETS

This section of the document presents the budget overview of the revenues and expenditures anticipated in each of CVAG's four programs. It combines the various funds into the respective programs to illustrate how each individual program is funded.

**TRANSPORTATION DEPARTMENT
PROGRAM GOALS AND OBJECTIVES
FISCAL YEAR 2018/19**

The Work Plan for 2018/19 is separated into nine main program areas:

1) Transportation Department Operations

- Transportation Program Administration
- Implementation of Transportation Project Prioritization Study (TPPS), Regional Arterial Cost Estimate (RACE) and Active Transportation Program (ATP)
- Capital Improvement Program (CIP) Update
- Other Transportation Planning
- Operations Management and Administration

This program area performs primarily administrative functions which consist of general transportation program administrative activities and various transportation planning duties in support of the Transportation Department. Continued implementation of the 2016 TPPS, RACE and ATP Program and implementation of the Valley-wide Signal Synchronization program are primary consideration this fiscal year.

(Funded from Measure A, TUMF and Active Transportation Program Funds)

2) Project Management and Contract Administration

- Financial Cash Flow
- Project Status Tracking
- Preparation and Monitoring of Reimbursement Agreements

Includes staff time to conduct project oversight (design, environmental, construction and close-out), preparation of reimbursement agreements for regional arterial projects, review and approval of project billings in accordance with project scope of work and participation in project development team meetings and associated staff reports.

(Funded from Measure A, TUMF, LTF and Special Program Funds)

3) CV Link Project Development (Phased)

- Project Development and Monitoring
- Cash Flow Tracking
- Grant Condition Monitoring

Includes staff time to conduct project oversight of consultant services (environmental compliance and phased construction plans); review of project billings; participation in project development team meetings and preparation of associated reports. Developing construction plans, cost estimates and seeking additional funding for the CV Link Project is a primary consideration this fiscal year.

(Funded from Riverside County Regional Park and Open Space District Grant, Caltrans Environmental Justice Grant, California Strategic Growth Council Grant, PP&M, LTF, Sentinel Project AQMD Grant, CMAQ, ATP and Measure A)

4) **Riverside County Transportation Commission (RCTC) Programs**

- Congestion Management Program/System (CMP/CMS)
- RCTC Technical Advisory Committee
- SB 821
- Coachella Valley Rail Program

Includes staff time to support the Riverside County Congestion Management Program; analysis of traffic patterns through the traffic count program; provide RCTC staff regional transportation project information for the State Regional Transportation Improvement Program (RTIP); support the RCTC Technical Advisory Committee; support efforts for County-wide SB 821 funding; Coachella Valley Passenger Rail Service Development Plan.

(Funded from LTF, STA, Proposition 1B [one-time funds] and TUMF)

5) **Planning, Programming and Monitoring Program**

- Regional Transportation Improvement Program/State Transportation Improvement Program (RTIP/STIP)

This area includes staff time in support of the State Transportation Improvement Program (STIP) and Regional Transportation Improvement Program (RTIP), support in implementation and updating of the CVAG Transportation Project Prioritization Study (TPPS), coordination of updates to the Capital Improvement Plan (CIP), and monitoring and examining impacts of implementing SB 45. TPPS activities support the regional project construction program which includes staff time to develop an annual prioritized list of construction projects and required financial resources.

(Funded from PP&M, LTF and Measure A)

6) **Miscellaneous Programs**

- GIS Information Services
- Maintain Transportation Model
- Regional Arterial Traffic Count Program

This area involves support to multiple programs with a focus on key project areas. These areas include staff time and project management to maintain and provide input for GIS Information Services, the countywide transportation demand model, the regional arterial traffic count program, and transportation legislation review and analysis. GIS Information Services includes staff time to provide regional land use information to CVAG jurisdictions, developers, SCAG and Caltrans. The countywide transportation model involves support for the RIVTAM transportation model for forecasting projected transportation system needs to the year 2039.

(Funded from Measure A, TUMF, and Special Program Funds)

7) **Congestion Management /Air Quality Programs**

- CM/AQ Programs
- Conformance with SIP requirements

Involves Transportation Department staff support to CMAQ program areas. Also includes implementation of State Implementation Plan (SIP) conformance to CVAG regional projects.

(Funded from CMAQ and Measure A)

8) **Transportation Uniform Mitigation Fee (TUMF) Program**

- TUMF Program Administration
- TUMF/GIS Interface
- TUMF Audits

Includes staff time in support of the TUMF program and TUMF/GIS Interface program. TUMF program activities include staff time to update the program, monitor the implementation of the TUMF program in member jurisdictions, to perform annual fiscal reviews of building permits and monthly TUMF collections, to research, analyze and prepare reports for TUMF appeals, to enter TUMF collections in the TUMF data base, to meet with developers on request to review potential TUMF assessments, and to perform special TUMF analysis on request. The TUMF/GIS Interface program requires support for continuing the development of integrating the TUMF collection process with electronic transmission of new development information for land use coverages. The TUMF program is a primary consideration this fiscal year.

(Funded from TUMF)

9) **Governmental and Special Projects**

- Southern California Association of Governments (SCAG)

The SCAG program includes staff time to coordinate the CVAG sub-region SCAG Program needs, develop annual growth projections, provide input to the Federal and Regional Transportation Improvement Plans (FTIP and RTIP), and assist SCAG with transportation modeling refinements. Additionally, staff performs specific transportation project work for SCAG.

(Funded from Special Program Funds)

- Special Projects

Some proposed projects may involve general fund money or special grants. Any project not already a part of the regular work programs, will be brought through the committee process for approval of the proposed work.

(Funded from Special Grant funds)

TRANSPORTATION PROGRAM - FY 2018/2019

	FUND 601	FUND 611	FUND 612	FUND 618	FUND 411	TOTALS
	TUMF PROGRAM	MEASURE A	RCTC / LTF / PP&M	CV LINK	SCAG/OWP	
BEGINNING FUND BALANCE	\$ 290,189	\$ 32,998,073	\$ 616,770	\$ -	\$ -	\$ 33,905,032
REVENUES:						
6001 Measure "A"	\$ -	\$ 19,989,920	\$ -	\$ -	\$ -	\$ 19,989,920
6011 Meas. "A" In Lieu	700,000	-	-	-	-	700,000
6012 TUMF	3,491,720	-	-	-	-	3,491,720
6025 Local Repayments - Transportation	-	592,541	-	-	-	592,541
6032 RCTC - Admin. Reimbursements	-	550,000	-	-	-	550,000
6042 RCTC - PP&M	-	-	-	5,000	-	5,000
6051 RCTC - LTF	-	-	423,000	-	-	423,000
7031 Other Transportation Funding	-	60,687,396	-	-	-	60,687,396
7031 Other Revenue	-	-	6,118,825	25,828,000	-	31,946,825
8001 Investment Income	114,954	585,860	-	-	-	700,814
Total Revenues	\$ 4,306,674	\$ 82,405,717	\$ 6,541,825	\$ 25,833,000	\$ -	\$ 119,087,216
EXPENDITURES:						
Personnel						
1101 Salaries	\$ 248,101	\$ 377,623	\$ 49,049	\$ 182,610	\$ 1,712	\$ 859,095
1103 Auto Allowance	864	1,512	288	720	-	3,384
1211 PERS	38,059	53,570	7,428	21,901	137	121,095
1213 Medicare	3,790	5,823	713	2,649	25	13,000
1221 Group Insurance	33,506	56,676	9,413	24,603	510	124,708
1226 Unemployment	770	1,173	153	567	5	2,668
1231 State Compensation	2,569	3,911	510	1,892	18	8,900
1241 Long Term Disability	1,094	1,666	217	806	8	3,791
1261 Deferred Compensation	352	617	117	294	-	1,380
Total Personnel Expenditures	\$ 329,105	\$ 502,571	\$ 67,888	\$ 236,042	\$ 2,415	\$ 1,138,021
Non-Personnel						
2321 Communications / Phone	\$ 2,351	\$ 3,579	\$ 466	\$ 1,732	\$ 17	\$ 8,145
2341 Advertising	1,164	2,123	23	84	1	3,395
2353 Comprehensive Insurance	12,530	19,074	2,486	9,229	88	43,407
2401 Memberships / Registration	114	173	5,023	84	1	5,395
2415 Postage	520	908	34	125	1	1,588
2417 General Expense	1,253	1,907	249	923	9	4,341
2418 Per Diem Payments	2,520	4,680	-	-	-	7,200
2421 Subscriptions	273	416	55	201	2	947
2422 Computer Software	5,377	9,408	1,183	2,027	19	18,014
2423 Office Supplies	1,333	2,204	160	595	6	4,298
2425 Legal Services	7,072	12,524	362	51,342	13	71,313
2427 Medical Services	70	130	-	-	-	200
2428 Accounting Services	4,328	6,589	859	3,188	30	14,994
2431 Professional Services	4,920	6,517	114	420	4	11,975
2451 Equipment Lease / Maintenance	1,253	1,907	249	923	9	4,341
2461 Building Lease / Rent	15,337	23,409	3,052	11,327	108	53,233
2481 Printing	232	412	1,011	42	1	1,698
2484 Resource Materials	456	694	90	336	3	1,579
2485 Training - Employee	2,904	4,422	577	2,139	20	10,062
2502 Local Meetings	1,418	2,392	142	529	505	4,986
2503 Travel and Training	1,418	2,392	142	1,029	705	5,686
2512 Utilities	1,709	2,601	340	1,259	12	5,921
4821 Equipment	1,750	3,250	-	-	-	5,000
Total Non-Personnel Expenditures	\$ 70,302	\$ 111,711	\$ 16,617	\$ 87,534	\$ 1,554	\$ 287,718
Other						
2432 Consultants / Service Providers	\$ 17,500	\$ 32,500	\$ 4,400,612	\$ 1,100,000	\$ -	\$ 5,550,612
2433 Construction / Project Costs	3,466,598	90,482,506	5,396,400	24,728,000	-	124,073,504
8981 Debt Service	-	3,012,233	-	-	-	3,012,233
3500 Operating Transfers Out	73,516	3,856,922	391,715	54,146	490	4,376,789
9000 Operating Transfers In	-	-	(3,744,924)	(372,722)	(4,459)	(4,122,105)
Total Non-Personnel Expenditures	\$ 3,557,614	\$ 97,384,161	\$ 6,443,803	\$ 25,509,424	\$ (3,969)	\$ 132,891,033
Total Personnel/Non-Personnel/Other	\$ 3,957,021	\$ 97,998,443	\$ 6,528,308	\$ 25,833,000	\$ -	\$ 134,316,772
Net Excess (Deficit)	\$ 349,653	\$ (15,592,726)	\$ 13,517	\$ -	\$ -	\$ (15,229,556)
ENDING FUND BALANCE	\$ 639,842	\$ 17,405,347	\$ 630,287	\$ -	\$ -	\$ 18,675,476

**COMMUNITY RESOURCES
PROGRAM GOALS AND OBJECTIVES
FISCAL YEAR 2018/2019**

The goals for the Community Resources Department for fiscal year 2018/19 are managing programs that encompass the topics of homelessness, public safety, and community development.

CV Housing First: Under the approved contract, Path of Life Ministries, a nonprofit organization, oversees “Housing First” programs that focus on Rapid Rehousing opportunities, emergency rental assistance, crisis stabilization options and other supportive services. The program was initially launched in the western Coachella Valley due to transition of services at Roy’s Desert Resource Center, but it has since been expanded geographically to help people across the Coachella Valley. More than \$1.7 million has been committed to CV Housing First, thanks in large part to a dollar-for-dollar match from the Desert Healthcare District/ Foundation. Additionally, the CVAG Homelessness Committee, along with HARC, Inc., will continue to monitor and evaluate CV Housing First’s progress and provide reports to our cities.

Shift in Approach on Homelessness: The CVAG Homelessness Committee continues to work towards a holistic approach to homelessness. The committee is taking a multi-pronged approach to end homelessness. There is less of a focus on ordinances and more of a focus on finding the root cause of a person’s housing crisis. Federal and state homelessness funding policies are moving toward a Housing First model to focus on homelessness prevention and diversion, along with crisis housing for those that fall into homelessness. Housing First prioritizes helping people experiencing homelessness locate and move in to housing, then providing individualized and voluntary supportive services as needed. This approach emphasizes participant choice in both housing selection and in-service participation.

Alan Seman Bus Pass Program: This program will be in its 11th year of distributing bus passes to homeless individuals valley-wide through various community based organizations and non-profit groups. The program is named after the late Alan Seman, Mayor Pro Tem of the City of Rancho Mirage who was a tireless advocate for the transportation needs of the homeless. CVAG administers the program.

The Work Plan for Fiscal Year 2018/19 is separated into five (5) core program areas:

1) **COMMUNITY RESOURCES**

Although not active, the Human and Community Resources Committee (HCRC) remains a core program area of the department and ready to be activated as valleywide HCR related issues are identified and the need requires.

2) **PUBLIC SAFETY**

The general administration of the Public Safety Committee (PSC) includes the development of goals; as well as preparation of agendas, minutes, and coordination of meeting schedules, speakers, and presentations. Under the PSC's discretion, track, recommend, support and/or oppose proposed legislation that may impact the area.

3) **HOMELESSNESS**

General administration of the Homelessness Committee (HC) which includes development and follow-through of annually established goals, preparation and dissemination of agendas, minutes and meeting schedules. Develop projects and/or programs that respond to a regional approach. Coordinate presentations from local organizations to the Homelessness Committee that have potential regional significance.

4) **TECHNICAL PLANNING SUBCOMMITTEE**

This Subcommittee represents Planning Directors from the member jurisdictions. Beginning as an ad hoc group which met periodically; the group now meets quarterly and reports to the Technical Advisory Committee (TAC). Staff support for disseminating agendas and minutes and development of agenda items comes from the Community Resources Department.

5) **SOUTHERN CALIFORNIA ASSOCIATION OF GOVERNMENTS (SCAG)**

In partnership with the Southern California Association of Governments (SCAG); staff provides the following:

1. Serves as the Sub Regional Coordinator to disseminate SCAG information to the member jurisdictions including information related to the Regional Transportation Plan; enacted legislation including SB 375; the Regional Needs Housing Element (RHNA);
2. Make available video teleconference equipment provided by SCAG and installed in CVAG's MSW Conference to be used for video teleconference of SCAG meetings; public hearings; and presentations endorsed by SCAG.
3. Assist SCAG with arranging on site meetings on related topics with jurisdictions.
4. Attend Sub Regional Coordinators Meetings and assist local elected officials who are selected as representatives to SCAG's committees; with SCAG related issues and coordinate and perform local SCAG elections.

COMMUNITY RESOURCES PROGRAM - FY 2018/2019

FUND	101	101	101	204 / 205	301	702	711	TOTAL
	PUBLIC SAFETY	COMM. RESOURCES	HOMELESS	BUS PASS HOMELESS	AB2766	STREET SWEEPING	COLMAC	
BEGINNING FUND BALANCE	\$ -	\$ -	\$ -	\$ 844,923	\$ 49,932	\$ 548,178	\$ 3,007	\$ 1,446,040
REVENUES:								
1001 Member Agency Contributions	\$ 65,603	\$ 23,978	\$ 137,779	\$ -	\$ -	\$ -	\$ -	\$ 227,360
3001 AB2766	-	-	-	-	414,340	-	-	414,340
3031 MSRC	-	-	-	-	-	-	-	-
5012 Air Quality Enhancement / COLMAC	-	-	-	-	-	150,000	-	150,000
7010 Homeless Funding	-	-	-	898,711	-	-	-	898,711
7031 Other Revenue	-	-	-	-	-	14,691	-	14,691
8001 Investment Income	-	-	-	5,000	770	-	20	5,790
Total Revenues	\$ 65,603	\$ 23,978	\$ 137,779	\$ 903,711	\$ 415,110	\$ 164,691	\$ 20	\$ 1,710,892
EXPENDITURES:								
Personnel								
1101 Salaries	\$ 29,885	\$ 10,601	\$ 67,835	\$ -	\$ 14,614	\$ 9,724	\$ 1,674	\$ 134,333
1103 Auto Allowance	72	72	216	-	144	-	-	504
1211 PERS	2,979	1,690	6,932	-	3,185	1,261	359	16,406
1213 Medicare	892	155	1,444	-	442	142	25	3,100
1221 Group Insurance	8,006	1,742	17,798	-	1,512	2,157	196	31,411
1226 Unemployment	93	33	211	-	45	30	5	417
1231 State Compensation	309	111	704	-	151	101	18	1,394
1241 Long Term Disability	132	47	300	-	64	43	8	594
1261 Deferred Compensation	29	29	88	-	59	-	-	205
Total Personnel Expenditures	\$ 42,397	\$ 14,480	\$ 95,528	\$ -	\$ 20,216	\$ 13,458	\$ 2,285	\$ 188,364
Non-Personnel								
2321 Communications / Phone	\$ 283	\$ 102	\$ 644	\$ -	\$ 138	\$ 93	\$ 17	\$ 1,277
2341 Advertising	14	5	31	-	7	5	1	63
2353 Comprehensive Insurance	1,507	539	3,432	715	737	4,795	88	11,813
2401 Memberships / Registration	14	5	31	-	7	5	1	63
2415 Postage	340	327	46	-	65	7	1	786
2417 General Expense	151	54	343	-	74	50	9	681
2418 Per Diem Payments	7,800	-	8,400	-	3,000	-	-	19,200
2421 Subscriptions	33	12	75	-	16	11	2	149
2422 Computer Software	332	260	754	-	162	109	19	1,636
2423 Office Supplies	97	535	221	-	398	32	6	1,289
2425 Legal Services	220	1,578	500	-	1,107	72	12	3,489
2428 Accounting Services	521	186	1,186	-	255	171	30	2,349
2431 Professional Services	69	525	156	-	34	23	2,504	3,311
2451 Equipment Lease / Maintenance	151	54	343	-	74	50	9	681
2461 Building Lease / Rent	1,850	662	4,212	-	905	608	108	8,345
2481 Printing	7	202	16	-	3	2	1	231
2484 Resource Materials	55	20	125	-	27	18	3	248
2485 Training - Employee	349	125	796	-	171	115	20	1,576
2502 Local Meetings	186	531	197	-	142	178	5	1,239
2503 Travel and Training	186	531	197	-	142	28	5	1,089
2512 Utilities	206	74	468	-	101	68	12	929
Total Non-Personnel Expenditures	\$ 14,371	\$ 6,327	\$ 22,173	\$ 715	\$ 7,565	\$ 6,440	\$ 2,853	\$ 60,444
Other								
2432 Consultants / Service Providers	\$ -	\$ -	\$ -	\$ 1,500,000	\$ 5,000	\$ -	\$ -	\$ 1,505,000
2433 Construction / Project Costs	-	-	-	24,000	-	599,685	-	623,685
3500 Operating Transfers Out	8,835	3,171	20,078	-	432,261	2,886	490	467,721
9000 Operating Transfers In	-	-	-	-	-	(427,936)	(2,601)	(430,537)
Total Non-Personnel Expenditures	\$ 8,835	\$ 3,171	\$ 20,078	\$ 1,524,000	\$ 437,261	\$ 174,635	\$ (2,111)	\$ 2,165,869
Total Personnel/Non-Personnel/Other	\$ 65,603	\$ 23,978	\$ 137,779	\$ 1,524,715	\$ 465,042	\$ 194,533	\$ 3,027	\$ 2,414,677
Net Excess (Deficit)	\$ -	\$ -	\$ -	\$ (621,004)	\$ (49,932)	\$ (29,842)	\$ (3,007)	\$ (703,785)
ENDING FUND BALANCE	\$ -	\$ -	\$ -	\$ 223,919	\$ -	\$ 518,336	\$ -	\$ 742,255

ENERGY AND ENVIRONMENTAL RESOURCES FISCAL YEAR 2018/2019 PROGRAM GOALS AND OBJECTIVES

The Environmental Resources Department goals and objectives integrate a valley-wide commitment to resource conservation and sustainability. The Energy and Environmental Resources Committee provides a forum for our member jurisdictions to highlight past and present successes, provide updates on progress toward resource conservation and sustainability goals, and discuss environmental issues and opportunities for collaboration.

The Environmental Resources Department work plan will focus on the following program areas in Fiscal Year 2018/2019:

Water Conservation and Salton Sea Restoration:

Water conservation and Salton Sea restoration and revitalization continue to be top priorities for the Energy and Environmental Resources Committee as reflected in their adopted goals and objectives for 2018/2019. The water efficient landscaper certification course launched online in early 2017 as a partnership with Coachella Valley Water District and College of the Desert was updated in 2018, with a tracking system that allows us to measure participation. The Committee has set a water conservation goal of 30% by 2020, in collaboration with local water agencies and CVAG member jurisdictions. Support continues for the implementation and funding of Salton Sea revitalization through the Salton Sea Management Plan. The Committee also plans to follow the progress on the Salton Sea North Lake Concept.

Community Choice Energy

Launch of a Community Choice Energy program, through the newly formed joint powers authority, Desert Community Energy, will take place in August 2018 in the cities of Palm Springs, Cathedral City and Palm Desert. The locally controlled power supply program will work in partnership with Southern California Edison to bring customers electricity from renewable, carbon-free sources at competitive prices. Community choice energy offers benefits including competitive electricity rates, local control and consumer choice, and a cleaner, more efficient energy supply. The result is lower utility bills for consumers, an increased use of renewable energy as well as economic benefits and greenhouse gas reduction.

Property Assessed Clean Energy (PACE) Programs:

The regional Property Assessed Clean Energy (PACE) program now involves a total of nine providers under four statewide programs serving the CVAG region. Over \$98.6 million in financing has helped homes and businesses throughout the Coachella and Palo Verde Valleys install energy efficiency, water conservation, and renewable energy projects. CVAG provides oversight, vetting new providers before they are accepted by member agencies and ensuring compliance with consumer protection policies.

Desert Cities Energy Partnership:

The Desert Cities Energy Partnership provides resources for participating jurisdictions to promote energy efficiency; energy and cost savings for member agencies, residents and businesses; as well

as efforts to reduce greenhouse gas emissions. In the coming year, the partnership will offer tours and educational workshops about energy efficiency opportunities, tracking greenhouse gas emissions and energy use, and new technologies. Educational efforts will focus on zero net energy buildings and green building opportunities.

Sustainability and Greenhouse Gas Reduction/Climate Action Planning:

Regional coordination of Department programs including water conservation, solid waste recycling, used oil recycling, habitat conservation, and energy issues, fall under the banner of sustainability. We will continue to provide a forum for advancing regional sustainability initiatives.

Air Quality:

The Department provides support for air quality efforts. The Overseeding Certification Course for landscapers ensures “smart scalping” to reduce PM10. This course is offered online in partnership with College of the Desert. It was updated in 2018 with a tracking system that allows us to measure participation. The Department also coordinates funding for the Regional PM10 Street Sweeping Program.

Habitat Conservation:

The Department provides support to the Coachella Valley Conservation Commission to implement the Coachella Valley Multiple Species Habitat Conservation Plan. The CVCC is responsible for a successful land acquisition program as well as management of conservation lands. The CVCC also coordinates biological monitoring of the 27 animal and plant species and 27 natural communities covered by the plan.

The Department handles the ongoing coordination of the Energy and Environmental Resources (E&E) Committee including development and implementation of annual program goals and preparation of meeting agendas and materials. The Energy and Environmental Resources Committee includes all CVAG member jurisdictions as well as Mission Springs Water District and Imperial Irrigation District as voting members, and Coachella Valley Water District and Desert Water Agency as non-voting members. The Committee adopted 2018/2019 goals and objectives for coordination of regional conservation and sustainability issues:

I. Water Conservation and Water Quality:

Promote long-term conservation of water resources and support efforts to maintain a clean, reliable, and sustainable water supply in the Coachella Valley.

Objectives:

1. Collaborate with member jurisdictions and local water agencies to achieve a valley-wide per capita water conservation goal of 30% by 2020.
2. Partner with member agencies and partners to implement innovative programs, policies, and best practices, including landscaper certification on water efficiency to achieve sustainable water use.

II. Salton Sea Restoration:

CVAG strongly supports efforts to maintain and revitalize the Salton Sea.

Objectives:

1. Provide Committee members with updates on geothermal energy development in the Salton Sea region, particularly as it relates to potential funding for Salton Sea restoration.
2. Continue to support Salton Sea revitalization as opportunities and/or requests for support arise.
3. Provide information to the member jurisdictions about efforts to restore and revitalize the Salton Sea including the North Lake Concept proposed by Riverside County Supervisor Manuel Perez.

III. Energy Efficiency/Conservation:

The goal of the Energy Efficiency program is to encourage awareness about energy use and to initiate, encourage, and promote energy conservation and energy efficiency initiatives within the Coachella Valley and Palo Verde Valleys.

Objectives:

1. Launch a Community Choice Aggregation program in our region through Desert Community Energy.
2. Continue regional PACE programs with various PACE providers, monitor program effectiveness and provide quarterly updates to Energy & Environmental Resources Committee.
3. Explore and provide information on opportunities that could benefit energy consumers in the CVAG region (e.g. community solar, battery storage).
4. Continue the Desert Cities Energy Partnership, a regional energy efficiency partnership program involving member jurisdictions, local utilities and other partners. Achieve minimum 15% energy savings by all member agencies.
5. Promote implementation of green building policy and zero net energy buildings through the Green for Life program.
6. Present an Energy and Water Summit in 2018/2019, in cooperation with other partners. Obtain input from the Energy & Environmental Resources Committee about topics for the Summit.
7. Coordinate and communicate with Imperial Irrigation District with respect to Coachella Valley energy issues.

III. Air Quality:

The goals of the Air Quality program are to improve the air quality in the Coachella Valley and to reduce the impacts of PM₁₀ through regional coordination.

Objectives:

1. Evaluate the use of and impact of gas-powered leaf blowers.
2. Support restoration and related activities for the Salton Sea to limit impacts to regional air quality and health.
3. Monitor air quality issues, including PM₁₀, in the eastern Coachella Valley and valley-wide.
4. Consider options for improving effectiveness of the Regional Street Sweeping program. This will include a study to ensure effectiveness and cost efficiency for the street sweeping program. Continue to see funding for the program.
5. Continue to coordinate established PM₁₀ mitigation efforts with member jurisdictions and the South Coast Air Quality Management District.

6. Promote air quality and emissions reduction through development of the CV Link project.
7. Continue ongoing programs including collaboration with the South Coast Air Quality Management District to support air quality legislative efforts, monitoring of the Landscape Model Ordinance and other air quality programs.

V. Sustainable Resource Use:

Significant efforts have been made by CVAG jurisdictions to promote sustainable resource use. A goal is to continue to highlight past successes by our member agencies and identify future opportunities to promote sustainable resource use.

Objectives:

1. Provide opportunities for information sharing among member jurisdictions at Committee meetings so members can learn about other member agency projects on energy, resource conservation, livability, and sustainability.
2. Identify and encourage opportunities for access to biogas and biofuels.
3. Promote and seek funding for implementation of the Regional Plug-in Electric Vehicle Readiness Plan, completed in 2014.

VI. Climate Change and Greenhouse Gas Reduction:

Coordinate efforts to enhance awareness of climate change and ways to reduce greenhouse gas emissions.

Objectives:

1. Promote and support local jurisdictions' efforts, as well as regional greenhouse gas reductions strategies. Track and highlight progress on local jurisdiction goals for greenhouse gas reduction.
2. Provide a minimum of two workshop/training opportunities for member agencies on tools to implement climate action/sustainability plans and track progress.

VII. Solid Waste:

Increase the reduction, recycling and reuse of solid wastes through regional coordination.

Objectives:

1. Explore opportunities for waste to energy and biogas projects.
2. Identify opportunities to promote composting as a way to encourage waste reduction and recycling. The Solid Waste and Recycling Working Group will be asked to explore options for promoting composting.
3. Continue our ongoing program Used Oil Recycling Program and regional coordination on Household Hazardous Waste collection. Re-initiate a Waste Tire Recycling Program. Work with Solid Waste and Recycling Technical Working Group on ways to encourage waste reduction, recycling and reuse.

VIII. Report Card:

Develop and maintain a "report card" through semi-annual evaluations of the Coachella Valley's progress toward sustainability goals.

ENERGY AND ENVIRONMENTAL RESOURCES PROGRAM - FY 2018/2019

FUND	634	501	202/206	203	207	210	101	321	TOTAL
	MSHCP	AB939	ENERGY CONSERV.	AERIAL PHOTO.	TIRE RECYCLE	DCE	ENERGY & ENVIRONM	USED OIL RECYCLING	
BEGINNING FUND BALANCE	\$ 42,377	\$ 78,680	\$ 139,854	\$ 15,015	\$ -	\$ (314,690)	\$ -	\$ 36,264	\$ (2,500)
REVENUES:									
1001 Member Agency Contributions	\$ -	\$ -	\$ -	\$ -	\$ -	\$ -	\$ 122,144	\$ -	\$ 122,144
3021 Used Oil Grant	-	-	-	-	-	-	-	87,639	87,639
5001 AB939	-	31,860	-	-	-	-	-	-	31,860
7001 Multi-Species Habitat Conservation Plan	689,461	-	-	-	-	-	-	-	689,461
7005 Energy Conservation Funding	-	-	100,000	-	-	984,200	-	-	1,084,200
7031 Other Revenue	-	-	10,000	-	-	-	-	-	10,000
8001 Investment Income	-	500	100	-	-	-	-	340	940
Total Revenues	\$ 689,461	\$ 32,360	\$ 110,100	\$ -	\$ -	\$ 984,200	\$ 122,144	\$ 87,979	\$ 2,026,244
EXPENDITURES:									
Personnel									
1101 Salaries	\$ 352,172	\$ 13,007	\$ 51,992	\$ -	\$ 8,457	\$ 347,809	\$ 63,880	\$ 10,646	\$ 847,963
1103 Auto Allowance	720	144	144	-	-	1,440	72	72	2,592
1211 PERS	70,980	2,489	7,679	-	1,245	70,142	12,522	2,314	167,371
1213 Medicare	5,105	419	752	-	123	5,042	1,155	155	12,751
1221 Group Insurance	58,500	1,440	6,112	-	954	63,839	8,100	1,061	140,006
1226 Unemployment	1,093	41	161	-	26	1,080	198	33	2,632
1231 State Compensation	3,647	135	537	-	88	3,602	661	111	8,781
1241 Long Term Disability	1,553	58	229	-	37	1,534	281	47	3,739
1261 Deferred Compensation	294	59	58	-	-	587	29	29	1,056
Total Personnel Expenditures	\$ 494,064	\$ 17,792	\$ 67,664	\$ -	\$ 10,930	\$ 495,075	\$ 86,898	\$ 14,468	\$ 1,186,891
Non-Personnel									
2321 Communications / Phone	\$ 3,837	\$ 124	\$ 491	\$ -	\$ 80	\$ 3,796	\$ 605	\$ 101	\$ 9,034
2341 Advertising	661	6	23	-	4	160	29	10,005	10,888
2353 Comprehensive Insurance	17,786	660	2,618	-	429	17,567	3,223	539	42,822
2401 Memberships / Registration	161	6	23	-	4	160	29	5	388
2415 Postage	861	89	36	-	6	238	159	7	1,396
2417 General Expense	1,777	66	262	-	43	1,757	322	54	4,281
2418 Per Diem Payments	-	3,000	-	-	-	-	3,000	-	6,000
2421 Subscriptions	388	14	57	-	9	383	71	12	934
2422 Computer Software	12,002	145	575	-	94	4,157	990	118	18,081
2423 Office Supplies	1,644	43	169	-	28	1,132	208	95	3,319
2425 Legal Services	9,087	96	381	-	62	2,555	470	78	12,729
2428 Accounting Services	6,144	228	905	-	148	6,069	1,114	186	14,794
2431 Professional Services	1,802	30	119	-	20	799	147	25	2,942
2451 Equipment Lease / Maintenance	1,777	66	262	-	43	1,757	322	54	4,281
2461 Building Lease / Rent	21,823	810	3,213	-	527	21,560	3,956	662	52,551
2481 Printing	580	3	12	-	2	80	15	4,302	4,994
2484 Resource Materials	645	24	95	-	16	639	117	20	1,556
2485 Training - Employee	4,123	153	607	-	99	4,072	748	125	9,927
2502 Local Meetings	1,018	538	1,750	-	25	1,006	185	31	4,553
2503 Travel and Training	2,518	338	150	-	25	1,006	185	31	4,253
2512 Utilities	2,420	90	357	-	59	2,395	440	74	5,835
Total Non-Personnel Expenditures	\$ 91,054	\$ 6,529	\$ 12,105	\$ -	\$ 1,723	\$ 71,488	\$ 16,335	\$ 16,524	\$ 215,758
Other									
2432 Consultants / Service Providers	\$ -	\$ -	\$ -	\$ -	\$ 20,000	\$ -	\$ -	\$ 61,000	\$ 81,000
2433 Construction / Project Costs	-	-	10,000	-	5,000	-	-	12,000	27,000
3500 Operating Transfers Out	104,343	47,219	15,437	-	2,505	102,947	18,911	3,171	294,533
9000 Operating Transfers In	-	-	-	-	(40,158)	-	-	(3,171)	(43,329)
Total Non-Personnel Expenditures	\$ 104,343	\$ 47,219	\$ 25,437	\$ -	\$ (12,653)	\$ 102,947	\$ 18,911	\$ 73,000	\$ 359,204
Total Personnel/Non-Personnel/Other	\$ 689,461	\$ 71,540	\$ 105,206	\$ -	\$ -	\$ 669,510	\$ 122,144	\$ 103,992	\$ 1,761,853
Net Excess (Deficit)	\$ -	\$ (39,180)	\$ 4,894	\$ -	\$ -	\$ 314,690	\$ -	\$ (16,013)	\$ 264,391
ENDING FUND BALANCE	\$ 42,377	\$ 39,500	\$ 144,748	\$ 15,015	\$ -	\$ -	\$ -	\$ 20,251	\$ 261,891

**ADMINISTRATION
PROGRAM GOALS AND OBJECTIVES
FISCAL YEAR 2018/2019**

The Work Plan for 2018/19 is separated into three main areas:

General Assembly

The General Assembly is the top policy making body of CVAG. It has 65 (sixty five) members and is composed of the Riverside County Board of Supervisors, Mayors, City Councilmembers, and five Tribal Members of each member Tribe. The General Assembly is required to meet annually to elect officers and adopt work plans and a budget for the ensuing year.

Executive Committee

The Executive Committee is a 17 (seventeen) member policy making body of CVAG which meets between sessions of the General Assembly. Membership is comprised of the Riverside County Board of Supervisors, Mayors, and the Tribal Council Chairs, unless a member's jurisdictional body designates another member of the City Council or Tribal Council to serve as the member. The City Managers, County Chief Executive Officer (CEO), and the Tribal Chief Executive Officers (CEOs) serve as the non-voting members of the Executive Committee. Two representatives to the Southern California Association of Governments' Regional Council elected by the cities of the Coachella Valley also serve as non-voting members.

Goals:

The Executive Committee is the instrument for a regional approach to policy making for the local governments of the Coachella Valley.

Objectives:

- Determines the policies that direct the activities of CVAG's staff and other committees and monitors their performance.
- Serves as the review body for projects of regional significance.
- Acts on behalf of CVAG's General Assembly between meetings of the General Assembly.
- Reviews CVAG's financial affairs on a quarterly basis and directs the development of work plans for CVAG committees and a budget on an annual basis, for submission to the annual meeting of the General Assembly.
- Provides for the employment of an Executive Director; oversees personnel matters through the Personnel Committee; and completes evaluations of the Executive Director.
- Reviews and acts on the Technical Advisory Committee (TAC) recommendations resulting from the TAC's review of policy and new fiscal implications of plans developed by CVAG's committees.

Technical Advisory Committee

The City Managers, the CEO for the County, and the CEOs for the Tribal Councils comprise the Technical Advisory Committee. It reviews most matters coming before the Executive Committee including recommendations from the generic committees. The TAC is advised by two sub-committees composed of staff from the member jurisdictions; the Technical Planning Sub-Committee (TPS) composed of the Planning Directors or their representatives; and the Transportation Technical Advisory Committee (TTAS) composed of transportation staff. They also advise the generic committees, as appropriate, with the TTAS providing input to the Transportation Committee as well as the TAC on a regular basis.

Goals:

The Technical Advisory Committee is the instrument for a regional approach to the operations of local governments in the Coachella Valley.

Objectives:

- Advises the Executive Committee on implementation of the Coachella Valley Regional Transportation Program.
- Coordinates legislative advocacy affecting the Coachella Valley.
- Reviews all committees' plans for new programs to analyze their policy implications and new fiscal impacts.
- Acts as the Hearing Body for the Executive Committee on TUMF appeals.
- Develops liaison with the Western Riverside Council of Governments on all matters of mutual interest.
- Reviews and monitors all matters related to regional governance.
- Develops mechanisms for the exchange of ideas and discussion of issues for both elected officials and staff members.

ADMINISTRATION PROGRAM - FY2018/2019

FUND	101
	ADMIN.
BEGINNING FUND BALANCE	\$ 1,870,094
REVENUES:	
1001 Member Agency Contributions	\$ 74,113
7031 Other Revenue	21,000
8001 Investment Income	19,220
Total Revenues	\$ 114,333
EXPENDITURES:	
Personnel	
1101 Salaries	\$ 336,043
1103 Auto Allowance	720
1211 PERS	57,865
1213 Medicare	5,914
1221 Group Insurance	55,991
1226 Unemployment	1,043
1231 State Compensation	3,480
1241 Long Term Disability	1,482
1261 Deferred Compensation	294
Total Personnel Expenditures	\$ 462,832
Non-Personnel	
2321 Communications / Phone	\$ 3,184
2341 Advertising	154
2353 Comprehensive Insurance	16,973
2401 Memberships / Registration	154
2415 Postage	230
2417 General Expense	1,697
2418 Per Diem Payments	13,600
2421 Subscriptions	370
2422 Computer Software	4,569
2423 Office Supplies	1,094
2425 Legal Services	2,469
2427 Medical Services	300
2428 Accounting Services	3,863
2431 Professional Services	5,772
2451 Equipment Lease / Maintenance	1,697
2461 Building Lease / Rent	20,831
2481 Printing	1,077
2484 Resource Materials	617
2485 Training - Employee	3,935
2502 Local Meetings	972
2503 Travel and Training	972
2512 Utilities	2,315
2601 Community Forums/CVAG Conf.	21,000
4821 Equipment/Improvements	70,000
Total Non-Personnel Expenditures	\$ 177,845
Other	
3500 Operating Transfers Out	\$ 2,601
9000 Operating Transfers In	(545,673)
Total Non-Personnel Expenditures	\$ (543,072)
Total Personnel/Non-Personnel/Other	\$ 97,605
Net Excess (Deficit)	\$ 16,728
ENDING FUND BALANCE	\$ 1,886,822

FUND DETAIL

This section of the document presents the financial overview of each fund. Each report compares the proposed FY 2017/18 budget with the year-end revenue and expenditure estimates for FY 2016/17, the FY 2016/17 adopted budget, and the audited financial figures for FY 2015/16.

GENERAL FUND (FUND 101)

	FY2016/17 Actual	FY2017/18 Budget	FY2017/18 Yr. End Est.	FY2018/19 Budget
BEGINNING FUND BALANCE	\$ 1,419,177	\$ 1,643,239	\$ 1,643,239	\$ 1,870,094
REVENUES:				
1001 Member Agency Contributions	\$ 401,884	\$ 409,918	\$ 409,918	\$ 423,617
7031 Other Revenue	19,235	18,000	\$ 21,362	21,000
8001 Investment Income	11,844	10,000	18,660	19,220
Total Revenues	\$ 432,963	\$ 437,918	\$ 449,940	\$ 463,837
EXPENDITURES:				
Personnel				
1101 Salaries	\$ 106,461	\$ 452,765	\$ 408,279	\$ 508,244
1103 Auto Allowance	4	1,512	1,033	1,152
1211. PERS	10,316	54,020	56,045	81,988
1213 Medicare / FICA	2,399	8,760	6,654	9,560
1221 Group Insurance	29,337	91,665	68,738	91,637
1226 Unemployment	242	1,395	272	1,578
1231 State Compensation	752	4,677	4,272	5,265
1241 Long Term Disability	447	2,098	1,778	2,242
1261 Deferred Compensation	3	617	417	469
Total Personnel Expenditures	\$ 149,961	\$ 617,509	\$ 547,488	\$ 702,135
Non-Personnel				
2321 Communications / Phone	\$ 1,069	\$ 4,880	\$ 4,352	\$ 4,818
2341 Advertising	-	255	-	233
2353 Comprehensive Insurance	5,082	24,214	24,479	25,674
2401 Memberships / Registration	18	255	273	233
2415 Postage	453	1,134	439	1,102
2417 General Expense	282	2,803	1,381	2,567
2418 Per Diem Payments	10,721	30,550	13,510	32,800
2421 Subscriptions	30	612	-	561
2422 Computer Software	1,495	7,420	5,223	6,905
2423 Office Supplies	164	2,308	1,726	2,155
2425 Legal Services	1,508	5,579	4,847	5,237
2427 Medical Services	-	300	-	300
2428 Accounting Services	1,815	8,668	10,007	6,870
2431 Professional Services	662	7,914	3,674	6,669
2451 Equipment Lease / Maintenance	317	1,785	3,036	2,567
2461 Building Lease / Rent	6,962	34,410	28,841	31,511
2481 Printing	164	327	1,331	1,317
2484 Resource Materials	89	1,021	501	934
2485 Training - Employee	335	5,864	1,844	5,953
2502 Local Meetings	1,978	3,455	1,223	2,071
2503 Travel and Training	177	1,696	1,225	2,071
2512 Utilities	598	6,371	3,308	3,503
2601 Community Forums/CVAG Conf	20,042	18,000	21,000	21,000
4821 Equipment/Improvements	4,479	60,000	14,976	70,000
Total Non-Personnel Expenditures	\$ 58,440	\$ 229,821	\$ 147,196	\$ 237,051
Other				
2432 Consultants / Service Providers	\$ -	\$ -	\$ -	\$ -
2433 Construction / Project Costs	500	-	-	-
3500 Operating Transfers Out	-	52,552	45,063	53,596
9000 Operating Transfers In	-	(481,033)	(516,662)	(545,673)
Total Other	\$ 500	\$ (428,481)	\$ (471,599)	\$ (492,077)
Total Personnel/Non-Personnel/Other	\$ 208,901	\$ 418,849	\$ 223,085	\$ 447,109
Net Excess (Deficit)	\$ 224,062	\$ 19,069	\$ 226,855	\$ 16,728
ENDING FUND BALANCE	\$ 1,643,239	\$ 1,662,308	\$ 1,870,094	\$ 1,886,822

ENERGY CONSERVATION/PARTNERSHIP (FUND 202 AND 206)

	FY2016/17 Actual	FY2017/18 Budget	FY2017/18 Yr. End Est.	FY2018/19 Budget
BEGINNING FUND BALANCE	\$ 112,280	\$ 123,134	\$ 123,134	\$ 139,854
REVENUES:				
7005 Energy Conservation Funding	\$ 269,407	\$ 250,000	\$ 152,763	\$ 100,000
7031 Other Revenue	15,000	10,000	7,500	10,000
8001 Investment Income	207	-	95	100
Total Revenues	\$ 284,614	\$ 260,000	\$ 160,358	\$ 110,100
EXPENDITURES:				
Personnel				
1101 Salaries	\$ 153,507	\$ 96,473	\$ 66,734	\$ 51,992
1103 Auto Allowance	423	288	234	144
1211 PERS	18,618	10,120	8,743	7,679
1213 Medicare / FICA	2,338	1,397	1,011	752
1221 Group Insurance	20,764	12,785	8,260	6,112
1226 Unemployment	372	297	44	161
1231 State Compensation	1,081	995	698	537
1241 Long Term Disability	643	447	291	229
1261 Deferred Compensation	173	117	92	58
Total Personnel Expenditures	\$ 197,919	\$ 122,919	\$ 86,107	\$ 67,664
Non-Personnel				
2321 Communications / Phone	\$ 1,682	\$ 1,038	\$ 821	\$ 491
2341 Advertising	-	55	-	23
2353 Comprehensive Insurance	7,101	5,149	4,029	2,618
2401 Memberships / Registration	24	55	45	23
2415 Postage	49	81	24	36
2417 General Expense	410	597	176	262
2418 Per Diem Payments	812	-	211	-
2421 Subscriptions	46	130	-	57
2422 Computer Software	1,815	1,310	953	575
2423 Office Supplies	236	385	281	169
2425 Legal Services	5,499	868	1,980	381
2427 Medical Services	-	-	-	-
2428 Accounting Services	2,564	1,842	1,467	905
2431 Professional Services	971	1,571	5,252	119
2451 Equipment Lease / Maintenance	450	379	414	262
2461 Building Lease / Rent	10,013	7,317	4,711	3,213
2481 Printing	243	27	216	12
2484 Resource Materials	124	216	81	95
2485 Training - Employee	929	1,247	300	607
2502 Local Meetings	913	1,942	480	1,750
2503 Travel and Training	1,232	233	216	150
2512 Utilities	870	1,355	538	357
Total Non-Personnel Expenditures	\$ 35,983	\$ 25,797	\$ 22,195	\$ 12,105
Other				
2432 Consultants	\$ 1,597	\$ 30,000	\$ -	\$ -
2433 Construction / Project Costs	38,261	10,000	10,000	10,000
3500 Operating Transfers Out	-	31,193	25,336	15,437
9000 Operating Transfers In	-	-	-	-
Total Other	\$ 39,858	\$ 71,193	\$ 35,336	\$ 25,437
Total Personnel/Non-Personnel/Other	\$ 273,760	\$ 219,909	\$ 143,638	\$ 105,206
Net Excess (Deficit)	\$ 10,854	\$ 40,091	\$ 16,720	\$ 4,894
ENDING FUND BALANCE	\$ 123,134	\$ 163,225	\$ 139,854	\$ 144,748

AERIAL PHOTOGRAPHY/EVENTS (FUND 203)

	FY2016/17 Actual	FY2017/18 Budget	FY2017/18 Yr. End Est.	FY2018/19 Budget
BEGINNING FUND BALANCE	\$ 10,618	\$ 10,618	\$ 10,618	\$ 15,015
REVENUES:				
7031 Other Revenue	\$ -	\$ -	\$ 22,500	\$ -
Total Revenues	\$ -	\$ -	\$ 22,500	\$ -
EXPENDITURES:				
Personnel				
1101 Salaries	\$ -	\$ -	\$ -	\$ -
1103 Auto Allowance	-	-	-	-
1211 PERS	-	-	-	-
1213 Medicare / FICA	-	-	-	-
1221 Group Insurance	-	-	-	-
1226 Unemployment	-	-	-	-
1231 State Compensation	-	-	-	-
1241 Long Term Disability	-	-	-	-
1261 Deferred Compensation	-	-	-	-
Total Personnel Expenditures	\$ -	\$ -	\$ -	\$ -
Non-Personnel				
2321 Communications / Phone	\$ -	\$ -	\$ -	\$ -
2341 Advertising	-	-	-	-
2353 Comprehensive Insurance	-	-	-	-
2401 Memberships / Registration	-	-	-	-
2415 Postage	-	-	-	-
2417 General Expense	-	-	-	-
2418 Per Diem Payments	-	-	-	-
2421 Subscriptions	-	-	-	-
2422 Computer Software	-	-	-	-
2423 Office Supplies	-	-	-	-
2425 Legal Services	-	-	-	-
2428 Accounting Services	-	-	-	-
2431 Professional Services	-	-	-	-
2451 Equipment Lease / Maintenance	-	-	-	-
2461 Building Lease / Rent	-	-	-	-
2481 Printing	-	-	-	-
2484 Resource Materials	-	-	-	-
2485 Training - Employee	-	-	-	-
2502 Local Meetings	-	-	-	-
2503 Travel and Training	-	-	-	-
2512 Utilities	-	-	-	-
2601 Community Forums/CVAG Conf	-	-	18,103	-
4821 Equipment	-	-	-	-
Total Non-Personnel Expenditures	\$ -	\$ -	\$ 18,103	\$ -
Other				
2433 Construction / Project Costs	\$ -	\$ -	\$ -	\$ -
3500 Operating Transfers Out	-	-	-	-
Total Other	\$ -	\$ -	\$ -	\$ -
Total Personnel/Non-Personnel/Other	\$ -	\$ -	\$ 18,103	\$ -
Net Excess (Deficit)	\$ -	\$ -	\$ 4,397	\$ -
ENDING FUND BALANCE	\$ 10,618	\$ 10,618	\$ 15,015	\$ 15,015

BUS PASSES (FUND 204) AND HOMELESS (FUND 205)

	FY2016/17 Actual	FY2017/18 Budget	FY2017/18 Yr. End Est.	FY2018/19 Budget
BEGINNING FUND BALANCE	\$ 140,209	\$ 111,781	\$ 111,781	\$ 844,923
REVENUES:				
7010 Homeless Funding	\$ 1,158,711	\$ 885,737	\$ 1,752,700	\$ 898,711
7031 Other Revenue	164,517	-	-	-
8001 Investment Income	1,977	1,000	5,905	5,000
Total Revenues	\$ 1,325,205	\$ 886,737	\$ 1,758,605	\$ 903,711
EXPENDITURES:				
Personnel				
1101 Salaries	\$ -	\$ -	\$ -	\$ -
1103 Auto Allowance	-	-	-	-
1211 PERS	-	-	-	-
1213 Medicare / FICA	-	-	-	-
1221 Group Insurance	-	-	-	-
1226 Unemployment	-	-	-	-
1231 State Compensation	-	-	-	-
1241 Long Term Disability	-	-	-	-
1261 Deferred Compensation	-	-	-	-
Total Personnel Expenditures	\$ -	\$ -	\$ -	\$ -
Non-Personnel				
2321 Communications / Phone	\$ -	\$ -	\$ -	\$ -
2341 Advertising	-	-	-	-
2353 Comprehensive Insurance	662	1,000	1,463	715
2401 Memberships / Registration	-	-	-	-
2415 Postage	-	-	-	-
2417 General Expense	-	-	-	-
2418 Per Diem Payments	-	-	-	-
2421 Subscriptions	-	-	-	-
2422 Computer Software	-	-	-	-
2423 Office Supplies	-	-	-	-
2425 Legal Services	-	-	-	-
2428 Accounting Services	-	-	-	-
2431 Professional Services	-	-	-	-
2451 Equipment Lease / Maintenance	-	-	-	-
2461 Building Lease / Rent	-	-	-	-
2481 Printing	-	-	-	-
2484 Resource Materials	-	-	-	-
2485 Training - Employee	-	-	-	-
2502 Local Meetings	-	-	-	-
2503 Travel and Training	-	-	-	-
2512 Utilities	-	-	-	-
4821 Equipment	137,600	-	-	-
Total Non-Personnel Expenditures	\$ 138,262	\$ 1,000	\$ 1,463	\$ 715
Other				
2432 Consultants / Service Providers	\$ 1,193,721	\$ 864,737	\$ 1,000,000	\$ 1,500,000
2433 Construction / Project Costs	21,650	21,000	24,000	24,000
3500 Operating Transfers Out	-	-	-	-
9000 Operating Transfers In	-	-	-	-
Total Other	\$ 1,215,371	\$ 885,737	\$ 1,024,000	\$ 1,524,000
Total Personnel/Non-Personnel/Other	\$ 1,353,633	\$ 886,737	\$ 1,025,463	\$ 1,524,715
Net Excess (Deficit)	\$ (28,428)	\$ -	\$ 733,142	\$ (621,004)
ENDING FUND BALANCE	\$ 111,781	\$ 111,781	\$ 844,923	\$ 223,919

TIRE RECYCLING (FUND 207)

	FY2016/17 Actual	FY2017/18 Budget	FY2017/18 Yr. End Est.	FY2018/19 Budget
BEGINNING FUND BALANCE	\$ (22,837)	\$ (41,317)	\$ (41,317)	\$ -
REVENUES:				
7031 Other Revenue	\$ -	\$ -	\$ 42,433	\$ -
Total Revenues	\$ -	\$ -	\$ 42,433	\$ -
EXPENDITURES:				
Personnel				
1101 Salaries	\$ 397	\$ 10,141	\$ 1,058	\$ 8,457
1103 Auto Allowance	-	-	-	-
1211 PERS	37	878	128	1,245
1213 Medicare / FICA	6	147	16	123
1221 Group Insurance	48	1,432	103	954
1226 Unemployment	3	31	1	26
1231 State Compensation	3	105	11	88
1241 Long Term Disability	2	47	5	37
1261 Deferred Compensation	-	-	-	-
Total Personnel Expenditures	\$ 496	\$ 12,781	\$ 1,322	\$ 10,930
Non-Personnel				
2321 Communications / Phone	\$ 3	\$ 109	\$ 12	\$ 80
2341 Advertising	-	6	-	4
2353 Comprehensive Insurance	1	541	88	429
2401 Memberships / Registration	-	6	1	4
2415 Postage	-	8	-	6
2417 General Expense	1	63	2	43
2418 Per Diem Payments	4	-	-	-
2421 Subscriptions	-	14	-	9
2422 Computer Software	11	138	33	94
2423 Office Supplies	1	40	3	28
2425 Legal Services	6	91	9	62
2427 Medical Services	-	-	-	-
2428 Accounting Services	2	194	24	148
2431 Professional Services	4	165	12	20
2451 Equipment Lease / Maintenance	1	40	5	43
2461 Building Lease / Rent	24	769	71	527
2481 Printing	1	3	2	2
2484 Resource Materials	-	23	1	16
2485 Training - Employee	1	131	3	99
2502 Local Meetings	1	36	1	25
2503 Travel and Training	-	25	4	25
2512 Utilities	3	143	6	59
Total Non-Personnel Expenditures	\$ 64	\$ 2,545	\$ 277	\$ 1,723
Other				
2432 Consultants	\$ 11,854	\$ 26,000	\$ -	\$ 20,000
2433 Construction / Project Costs	6,066	4,000	-	5,000
3500 Operating Transfers Out	-	3,261	404	2,505
9000 Operating Transfers In	-	(48,587)	(887)	(40,158)
Total Other	\$ 17,920	\$ (15,326)	\$ (483)	\$ (12,653)
Total Personnel/Non-Personnel/Other	\$ 18,480	\$ -	\$ 1,116	\$ -
Net Excess (Deficit)	\$ (18,480)	\$ -	\$ 41,317	\$ -
ENDING FUND BALANCE	\$ (41,317)	\$ (41,317)	\$ -	\$ -

DESERT COMMUNITY ENERGY (FUND 210)

	FY2016/17 Actual	FY2017/18 Budget	FY2017/18 Yr. End Est.	FY2018/19 Budget
BEGINNING FUND BALANCE	\$ -	\$ (14,611)	\$ (14,611)	\$ (314,690)
REVENUES:				
7005 Energy Conservation Funding	\$ -	\$ -	\$ -	\$ 984,200
Total Revenues	\$ -	\$ -	\$ -	\$ 984,200
EXPENDITURES:				
Personnel				
1101 Salaries	\$ -	\$ -	\$ 141,704	\$ 347,809
1103 Auto Allowance	-	-	650	1,440
1211 PERS	-	-	21,195	70,142
1213 Medicare / FICA	-	-	2,145	5,042
1221 Group Insurance	-	-	18,151	63,839
1226 Unemployment	-	-	94	1,080
1231 State Compensation	-	-	1,483	3,602
1241 Long Term Disability	-	-	618	1,534
1261 Deferred Compensation	-	-	265	587
Total Personnel Expenditures	\$ -	\$ -	\$ 186,305	\$ 495,075
Non-Personnel				
2321 Communications / Phone	\$ -	\$ -	\$ 2,193	\$ 3,796
2341 Advertising	-	-	-	160
2353 Comprehensive Insurance	-	-	8,612	17,567
2401 Memberships / Registration	-	-	1,595	160
2415 Postage	-	-	90	238
2417 General Expense	-	-	370	1,757
2418 Per Diem Payments	-	-	440	-
2421 Subscriptions	-	-	104	383
2422 Computer Software	-	-	1,745	4,157
2423 Office Supplies	-	-	591	1,132
2425 Legal Services	2,370	-	4,870	2,555
2427 Medical Services	-	-	-	200
2428 Accounting Services	-	-	3,117	6,069
2431 Professional Services	-	-	1,287	799
2451 Equipment Lease / Maintenance	-	-	875	1,757
2461 Building Lease / Rent	-	-	9,993	21,560
2481 Printing	-	-	457	80
2484 Resource Materials	-	-	171	639
2485 Training - Employee	-	-	634	4,072
2502 Local Meetings	598	-	1,322	1,006
2503 Travel and Training	285	-	2,755	1,006
2512 Utilities	-	-	1,135	2,395
Total Non-Personnel Expenditures	\$ 3,253	\$ -	\$ 42,356	\$ 71,488
Other				
2432 Consultants / Service Providers	\$ 11,358	\$ -	\$ 15,790	\$ -
2433 Construction Costs	-	-	1,869	-
3500 Operating Transfers Out	-	-	53,759	102,947
Total Other	\$ 11,358	\$ -	\$ 71,418	\$ 102,947
Total Personnel/Non-Personnel/Other	\$ 14,611	\$ -	\$ 300,079	\$ 669,510
Net Excess (Deficit)	\$ (14,611)	\$ -	\$ (300,079)	\$ 314,690
ENDING FUND BALANCE	\$ (14,611)	\$ (14,611)	\$ (314,690)	\$ -

AB2766 (FUND 301)

	FY2016/17 Actual	FY2017/18 Budget	FY2017/18 Yr. End Est.	FY2018/19 Budget
BEGINNING FUND BALANCE	\$ 67,388	\$ 153,435	\$ 153,435	\$ 49,932
REVENUES:				
3001 AB2766	\$ 391,551	\$ 441,645	\$ 406,216	\$ 414,340
8001 Investment Income	1,135	1,500	750	770
Total Revenues	\$ 392,686	\$ 443,145	\$ 406,966	\$ 415,110
EXPENDITURES:				
Personnel				
1101 Salaries	\$ 15,276	\$ 15,530	\$ 7,726	\$ 14,614
1103 Auto Allowance	135	144	101	144
1211 PERS	2,584	2,336	1,372	3,185
1213 Medicare / FICA	350	454	193	442
1221 Group Insurance	1,734	1,657	792	1,512
1226 Unemployment	19	48	5	45
1231 State Compensation	110	160	81	151
1241 Long Term Disability	65	72	34	64
1261 Deferred Compensation	55	59	38	59
Total Personnel Expenditures	\$ 20,328	\$ 20,460	\$ 10,342	\$ 20,216
Non-Personnel				
2321 Communications / Phone	\$ 183	\$ 167	\$ 94	\$ 138
2341 Advertising	-	9	-	7
2353 Comprehensive Insurance	888	827	466	737
2401 Memberships / Registration	3	9	5	7
2415 Postage	57	68	12	65
2417 General Expense	39	96	20	74
2418 Per Diem Payments	1,609	3,000	2,574	3,000
2421 Subscriptions	2	21	-	16
2422 Computer Software	219	210	109	162
2423 Office Supplies	24	412	32	398
2425 Legal Services	54	1,139	84	1,107
2427 Medical Services	-	-	-	-
2428 Accounting Services	297	296	170	255
2431 Professional Services	83	252	70	34
2451 Equipment Lease / Maintenance	50	61	48	74
2461 Building Lease / Rent	1,017	1,175	545	905
2481 Printing	18	4	25	3
2484 Resource Materials	16	35	9	27
2485 Training - Employee	50	200	35	171
2502 Local Meetings	280	155	191	142
2503 Travel and Training	44	137	41	142
2512 Utilities	81	218	62	101
Total Non-Personnel Expenditures	\$ 5,014	\$ 8,491	\$ 4,592	\$ 7,565
Other				
2432 Consultants / Service Providers	\$ 2,450	\$ 5,000	\$ 2,500	\$ 5,000
3500 Operating Transfers Out	278,847	368,734	493,035	432,261
Total Other	\$ 281,297	\$ 373,734	\$ 495,535	\$ 437,261
Total Personnel/Non-Personnel/Other	\$ 306,639	\$ 402,685	\$ 510,469	\$ 465,042
Net Excess (Deficit)	\$ 86,047	\$ 40,460	\$ (103,503)	\$ (49,932)
ENDING FUND BALANCE	\$ 153,435	\$ 193,895	\$ 49,932	\$ -

USED OIL RECYCLING (FUND 321)

	FY2016/17 Actual	FY2017/18 Budget	FY2017/18 Yr. End Est.	FY2018/19 Budget
BEGINNING FUND BALANCE	\$ 36,086	\$ 43,435	\$ 43,435	\$ 36,264
REVENUES:				
3021 Used Oil Grant	\$ 74,418	\$ 74,000	\$ 87,639	\$ 87,639
8001 Investment Income	197	150	330	340
Total Revenues	\$ 74,615	\$ 74,150	\$ 87,969	\$ 87,979
EXPENDITURES:				
Personnel				
1101 Salaries	\$ 7,791	\$ 12,091	\$ 6,206	\$ 10,646
1103 Auto Allowance	119	72	101	72
1211 PERS	1,290	1,822	1,093	2,314
1213 Medicare / FICA	119	175	94	155
1221 Group Insurance	987	1,388	684	1,061
1226 Unemployment	17	37	4	33
1231 State Compensation	55	125	65	111
1241 Long Term Disability	33	56	27	47
1261 Deferred Compensation	48	29	40	29
Total Personnel Expenditures	\$ 10,459	\$ 15,795	\$ 8,314	\$ 14,468
Non-Personnel				
2321 Communications / Phone	\$ 77	\$ 130	\$ 66	\$ 101
2341 Advertising	8,182	10,007	7,033	10,005
2353 Comprehensive Insurance	375	646	370	539
2401 Memberships / Registration	1	7	4	5
2415 Postage	7	10	4	7
2417 General Expense	21	75	17	54
2418 Per Diem Payments	39	-	20	-
2421 Subscriptions	2	16	-	12
2422 Computer Software	102	164	88	118
2423 Office Supplies	12	108	26	95
2425 Legal Services	44	109	68	78
2427 Medical Services	-	-	-	-
2428 Accounting Services	133	231	136	186
2431 Professional Services	48	197	56	25
2451 Equipment Lease / Maintenance	23	48	39	54
2461 Building Lease / Rent	510	918	439	662
2481 Printing	2,196	4,303	3,567	4,302
2484 Resource Materials	7	27	8	20
2485 Training - Employee	25	156	28	125
2502 Local Meetings	7	43	12	31
2503 Travel and Training	13	29	19	31
2512 Utilities	44	170	51	74
Total Non-Personnel Expenditures	\$ 11,868	\$ 17,394	\$ 12,051	\$ 16,524
Other				
2432 Consultants / Service Providers	\$ 44,930	\$ 45,000	\$ 59,000	\$ 61,000
2433 Construction / Project Costs	5,063	12,000	15,775	12,000
3500 Operating Transfers Out	-	3,901	2,351	3,171
9000 Operating Transfers In	(5,054)	(3,985)	(2,351)	(3,171)
Total Other	\$ 44,939	\$ 56,916	\$ 74,775	\$ 73,000
Total Personnel/Non-Personnel/Other	\$ 67,266	\$ 90,105	\$ 95,140	\$ 103,992
Net Excess (Deficit)	\$ 7,349	\$ (15,955)	\$ (7,171)	\$ (16,013)
ENDING FUND BALANCE	\$ 43,435	\$ 27,480	\$ 36,264	\$ 20,251

SCAG/OWP (FUND 411)

	FY2016/17 Actual	FY2017/18 Budget	FY2017/18 Yr. End Est.	FY2018/19 Budget
BEGINNING FUND BALANCE	\$ -	\$ -	\$ -	\$ -
REVENUES:				
4001 SCAG Planning Grant	\$ -	\$ -	\$ -	\$ -
Total Revenues	\$ -	\$ -	\$ -	\$ -
EXPENDITURES:				
Personnel				
1101 Salaries	\$ 118	\$ 1,548	\$ 577	\$ 1,712
1103 Auto Allowance	-	-	-	-
1211 PERS	9	108	41	137
1213 Medicare / FICA	2	23	9	25
1221 Group Insurance	24	525	167	510
1226 Unemployment	-	5	-	5
1231 State Compensation	1	17	6	18
1241 Long Term Disability	-	7	3	8
1261 Deferred Compensation	-	-	-	-
Total Personnel Expenditures	\$ 154	\$ 2,233	\$ 803	\$ 2,415
Non-Personnel				
2321 Communications / Phone	\$ 1	\$ 17	\$ 6	\$ 17
2341 Advertising	-	1	-	1
2353 Comprehensive Insurance	8	86	48	88
2401 Memberships / Registration	-	1	-	1
2415 Postage	-	1	-	1
2417 General Expense	-	10	1	9
2418 Per Diem Payments	-	-	-	-
2421 Subscriptions	-	2	-	2
2422 Computer Software	6	22	12	19
2423 Office Supplies	-	6	1	6
2425 Legal Services	-	14	5	13
2427 Medical Services	-	-	-	-
2428 Accounting Services	3	31	13	30
2431 Professional Services	1	26	7	4
2451 Equipment Lease / Maintenance	-	6	3	9
2461 Building Lease / Rent	8	122	39	108
2481 Printing	-	1	1	1
2484 Resource Materials	-	4	-	3
2485 Training - Employee	1	21	2	20
2502 Local Meetings	-	506	130	505
2503 Travel and Training	-	704	229	705
2512 Utilities	1	23	3	12
Total Non-Personnel Expenditures	\$ 29	\$ 1,604	\$ 500	\$ 1,554
Other				
3500 Operating Transfers Out	\$ -	\$ 480	\$ 221	\$ 490
9000 Operating Transfers In	(183)	(4,317)	(1,524)	(4,459)
Total Other	\$ (183)	\$ (3,837)	\$ (1,303)	\$ (3,969)
Total Personnel/Non-Personnel/Other	\$ -	\$ -	\$ -	\$ -
Net Excess (Deficit)	\$ -	\$ -	\$ -	\$ -
ENDING FUND BALANCE	\$ -	\$ -	\$ -	\$ -

AB939 (FUND 501)

	FY2016/17 Actual	FY2017/18 Budget	FY2017/18 Yr. End Est.	FY2018/19 Budget
BEGINNING FUND BALANCE	\$ 58,803	\$ 66,714	\$ 66,714	\$ 78,680
REVENUES:				
5001 AB939	\$ 31,860	\$ 31,860	\$ 31,860	\$ 31,860
8001 Investment Income	89	50	485	500
Total Revenues	\$ 31,949	\$ 31,910	\$ 32,345	\$ 32,360
EXPENDITURES:				
Personnel				
1101 Salaries	\$ 11,133	\$ 18,561	\$ 6,915	\$ 13,007
1103 Auto Allowance	182	216	121	144
1211 PERS	1,640	2,618	1,054	2,489
1213 Medicare / FICA	288	498	181	419
1221 Group Insurance	1,390	2,345	796	1,440
1226 Unemployment	26	57	5	41
1231 State Compensation	78	191	72	135
1241 Long Term Disability	47	86	30	58
1261 Deferred Compensation	74	88	48	59
Total Personnel Expenditures	\$ 14,858	\$ 24,660	\$ 9,222	\$ 17,792
Non-Personnel				
2321 Communications / Phone	\$ 133	\$ 199	\$ 85	\$ 124
2341 Advertising	-	10	-	6
2353 Comprehensive Insurance	527	988	410	660
2401 Memberships / Registration	2	10	5	6
2415 Postage	55	96	52	89
2417 General Expense	30	114	19	66
2418 Per Diem Payments	1,608	3,000	2,573	3,000
2421 Subscriptions	3	25	-	14
2422 Computer Software	146	251	103	145
2423 Office Supplies	17	74	42	43
2425 Legal Services	65	166	76	96
2427 Medical Services	-	-	-	-
2428 Accounting Services	189	354	152	228
2431 Professional Services	69	302	62	30
2451 Equipment Lease / Maintenance	33	73	43	66
2461 Building Lease / Rent	727	1,404	489	810
2481 Printing	17	5	23	3
2484 Resource Materials	9	42	9	24
2485 Training - Employee	35	239	32	153
2502 Local Meetings	370	566	228	538
2503 Travel and Training	28	345	21	338
2512 Utilities	63	260	57	90
Total Non-Personnel Expenditures	\$ 4,126	\$ 8,523	\$ 4,481	\$ 6,529
Other				
2432 Consultants	-	-	-	-
2433 Construction / Project Costs	\$ -	\$ -	\$ 807	\$ -
3500 Operating Transfers Out	\$ 5,054	\$ 58,616	\$ 5,869	\$ 47,219
9000 Operating Transfers In	-	-	-	-
Total Other	\$ 5,054	\$ 58,616	\$ 6,676	\$ 47,219
Total Personnel/Non-Personnel/Other	\$ 24,038	\$ 91,799	\$ 20,379	\$ 71,540
Net Excess (Deficit)	\$ 7,911	\$ (59,889)	\$ 11,966	\$ (39,180)
ENDING FUND BALANCE	\$ 66,714	\$ 6,825	\$ 78,680	\$ 39,500

TUMF PROGRAM (FUND 601)

	FY2016/17 Actual	FY2017/18 Budget	FY2017/18 Yr. End Est.	FY2018/19 Budget
BEGINNING FUND BALANCE	\$ 8,715,169	\$ 8,584,544	\$ 8,584,544	\$ 290,189
REVENUES:				
6011 Meas. "A" In Lieu	\$ 722,253	\$ 670,000	\$ 705,421	\$ 700,000
6012 TUMF	3,083,965	2,700,000	3,390,020	3,491,720
7031 Other Revenue	1,920,991	-	-	-
8001 Investment Income	77,106	60,000	111,606	114,954
Total Revenues	\$ 5,804,315	\$ 3,430,000	\$ 4,207,047	\$ 4,306,674
EXPENDITURES:				
Personnel				
1101 Salaries	\$ 269,076	\$ 218,148	\$ 258,609	\$ 248,101
1103 Auto Allowance	1,180	936	1,045	864
1211 PERS	38,792	25,376	39,025	38,059
1213 Medicare / FICA	4,222	3,356	4,003	3,790
1221 Group Insurance	39,427	34,006	34,248	33,506
1226 Unemployment	588	672	172	770
1231 State Compensation	1,905	2,251	2,706	2,569
1241 Long Term Disability	1,131	1,010	1,126	1,094
1261 Deferred Compensation	481	382	436	352
Total Personnel Expenditures	\$ 356,802	\$ 286,137	\$ 341,370	\$ 329,105
Non-Personnel				
2321 Communications / Phone	\$ 2,685	\$ 2,349	\$ 2,824	\$ 2,351
2341 Advertising	347	1,172	478	1,164
2353 Comprehensive Insurance	13,092	11,656	15,446	12,530
2401 Memberships / Registration	151	123	277	114
2415 Postage	165	533	149	520
2417 General Expense	895	1,350	698	1,253
2418 Per Diem Payments	3,026	2,520	2,626	2,520
2421 Subscriptions	71	295	-	273
2422 Computer Software	5,896	5,590	5,918	5,377
2423 Office Supplies	525	1,395	1,257	1,333
2425 Legal Services	5,949	7,213	6,333	7,072
2427 Medical Services	-	70	11	70
2428 Accounting Services	4,645	4,172	5,678	4,328
2431 Professional Services	2,810	3,908	2,473	4,920
2451 Equipment Lease / Maintenance	951	859	1,616	1,253
2461 Building Lease / Rent	17,625	16,565	18,281	15,337
2481 Printing	437	236	900	232
2484 Resource Materials	495	491	320	456
2485 Training - Employee	1,477	2,822	1,493	2,904
2502 Local Meetings	2,944	1,473	1,320	1,418
2503 Travel and Training	1,451	1,228	1,969	1,418
2512 Utilities	1,504	3,068	2,105	1,709
4821 Equipment	392	1,400	1,400	1,750
Total Non-Personnel Expenditures	\$ 67,533	\$ 70,488	\$ 73,572	\$ 70,302
Other				
2432 Consultants / Service Providers	\$ 60,031	\$ 100,000	\$ 8,750	\$ 17,500
2433 Construction / Project Costs	5,450,574	6,920,657	11,979,521	3,466,598
3500 Operating Transfers Out	-	98,050	98,189	73,516
Total Other	\$ 5,510,605	\$ 7,118,707	\$ 12,086,460	\$ 3,557,614
Total Personnel/Non-Personnel/Other	\$ 5,934,940	\$ 7,475,332	\$ 12,501,402	\$ 3,957,021
Net Excess (Deficit)	\$ (130,625)	\$ (4,045,332)	\$ (8,294,355)	\$ 349,653
ENDING FUND BALANCE	\$ 8,584,544	\$ 4,539,212	\$ 290,189	\$ 639,842

MEASURE A (FUND 611)

	FY2016/17 Actual	FY2017/18 Budget	FY2017/18 Yr. End Est.	FY2018/19 Budget
BEGINNING FUND BALANCE	\$ 40,430,036	\$ 46,967,034	\$ 46,967,034	\$ 32,998,073
REVENUES:				
6001 Measure "A"	\$ 14,582,793	\$ 19,000,000	\$ 19,407,690	\$ 19,989,920
6025 Local Repayments - Transportation	904,010	568,595	586,925	592,541
6032 RCTC - Admin. Reimbursements	510,832	530,000	548,427	550,000
7031 Other Transportation Funding	4,792,271	79,635,228	81,385,762	60,687,396
8001 Investment Income	351,524	350,000	568,795	585,860
Total Revenues	\$ 21,141,430	\$ 100,083,823	\$ 102,497,599	\$ 82,405,717
EXPENDITURES:				
Personnel				
1101 Salaries	\$ 339,631	\$ 334,104	\$ 282,306	\$ 377,623
1103 Auto Allowance	2,098	1,800	1,745	1,512
1211 PERS	46,932	37,081	41,010	53,570
1213 Medicare / FICA	5,405	5,204	4,433	5,823
1221 Group Insurance	56,594	58,815	42,266	56,676
1226 Unemployment	736	1,029	187	1,173
1231 State Compensation	2,406	3,449	2,954	3,911
1241 Long Term Disability	1,428	1,548	1,231	1,666
1261 Deferred Compensation	855	734	701	617
Total Personnel Expenditures	\$ 456,085	\$ 443,764	\$ 376,833	\$ 502,571
Non-Personnel				
2321 Communications / Phone	\$ 3,409	\$ 3,598	\$ 3,147	\$ 3,579
2341 Advertising	644	2,138	888	2,123
2353 Comprehensive Insurance	16,582	17,860	17,186	19,074
2401 Memberships / Registration	254	188	383	173
2415 Postage	280	930	207	908
2417 General Expense	1,238	2,068	753	1,907
2418 Per Diem Payments	4,812	4,680	4,189	4,680
2421 Subscriptions	89	451	-	416
2422 Computer Software	9,001	9,761	8,539	9,408
2423 Office Supplies	727	2,308	1,468	2,204
2425 Legal Services	7,812	12,758	46,720	12,524
2427 Medical Services	-	130	20	130
2428 Accounting Services	5,876	6,392	6,210	6,589
2431 Professional Services	4,230	6,102	5,854	6,517
2451 Equipment Lease / Maintenance	1,287	1,316	1,742	1,907
2461 Building Lease / Rent	22,253	25,380	19,904	23,409
2481 Printing	569	419	1,007	412
2484 Resource Materials	784	752	341	694
2485 Training - Employee	2,239	4,324	1,854	4,422
2502 Local Meetings	5,278	2,484	2,056	2,392
2503 Travel and Training	2,354	2,108	2,978	2,392
2512 Utilities	1,897	4,700	2,258	2,601
4821 Equipment	728	2,600	2,600	3,250
Total Non-Personnel Expenditures	\$ 92,343	\$ 113,447	\$ 130,304	\$ 111,711
Other				
2432 Consultants / Service Providers	\$ 111,486	\$ 186,000	\$ 16,250	\$ 32,500
2433 Construction / Project Costs	10,864,445	110,130,733	112,704,873	90,482,506
8981 Debt Service	3,012,233	3,012,233	3,012,233	3,012,233
3500 Operating Transfers Out	67,840	159,162	226,067	3,856,922
Total Other	\$ 14,056,004	\$ 113,488,128	\$ 115,959,423	\$ 97,384,161
Total Personnel/Non-Personnel/Other	\$ 14,604,432	\$ 114,045,339	\$ 116,466,560	\$ 97,998,443
Net Excess (Deficit)	\$ 6,536,998	\$ (13,961,516)	\$ (13,968,961)	\$ (15,592,726)
ENDING FUND BALANCE	\$ 46,967,034	\$ 33,005,518	\$ 32,998,073	\$ 17,405,347

**RCTC LTF / PP&M (FUND 612),
& SIGNAL SYNCHRONIZATION (FUND 624)**

	FY2016/17 Actual	FY2017/18 Budget	FY2017/18 Yr. End Est.	FY2018/19 Budget
BEGINNING FUND BALANCE	\$ 362,125	\$ 131,053	\$ 380,707	\$ 616,770
REVENUES:				
6042 RCTC - PP&M	\$ 30,659	\$ 15,000	\$ 11,426	\$ -
6051 RCTC - LTF	382,500	396,000	396,000	423,000
7031 Other Revenue	607,216	1,000,000	1,233,697	6,118,825
8001 Investment Income	267	200	-	-
Total Revenues	\$ 1,020,642	\$ 1,411,200	\$ 1,641,123	\$ 6,541,825
EXPENDITURES:				
Personnel				
1101 Salaries	\$ 35,753	\$ 66,931	\$ 60,503	\$ 49,049
1103 Auto Allowance	173	432	98	288
1211 PERS	4,154	8,469	8,823	7,428
1213 Medicare / FICA	545	969	920	713
1221 Group Insurance	7,081	14,202	8,438	9,413
1226 Unemployment	94	206	43	153
1231 State Compensation	251	689	631	510
1241 Long Term Disability	150	309	260	217
1261 Deferred Compensation	70	176	40	117
Total Personnel Expenditures	\$ 48,271	\$ 92,383	\$ 79,756	\$ 67,888
Non-Personnel				
2321 Communications / Phone	\$ 343	\$ 719	\$ 643	\$ 466
2341 Advertising	-	537	-	23
2353 Comprehensive Insurance	1,576	3,572	2,734	2,486
2401 Memberships / Registration	2,898	5,036	3,004	5,023
2415 Postage	28	57	21	34
2417 General Expense	96	413	205	249
2418 Per Diem Payments	199	-	317	-
2421 Subscriptions	11	90	-	55
2422 Computer Software	396	1,546	711	1,183
2423 Office Supplies	55	266	323	160
2425 Legal Services	246	601	2,818	362
2427 Medical Services	-	-	-	-
2428 Accounting Services	579	1,279	1,298	859
2431 Professional Services	232	1,090	443	114
2451 Equipment Lease / Maintenance	102	263	437	249
2461 Building Lease / Rent	2,323	5,076	4,418	3,052
2481 Printing	60	1,019	241	1,011
2484 Resource Materials	28	151	97	90
2485 Training - Employee	110	865	328	577
2502 Local Meetings	308	237	461	142
2503 Travel and Training	51	162	248	142
2512 Utilities	205	940	601	340
4821 Equipment	-	-	-	-
Total Non-Personnel Expenditures	\$ 9,846	\$ 23,919	\$ 19,348	\$ 16,617
Other				
2432 Consultants / Service Providers	\$ 567,514	\$ 1,000,000	\$ 1,239,697	\$ 4,400,612
2433 Construction / Project Costs	-	-	-	5,396,400
3500 Operating Transfers Out	444,269	25,998	185,095	391,715
9000 Operating Transfers In	(67,840)	(78,503)	(118,836)	(3,744,924)
Total Other	\$ 943,943	\$ 947,495	\$ 1,305,956	\$ 6,443,803
Total Personnel/Non-Personnel/Other	\$ 1,002,060	\$ 1,063,797	\$ 1,405,060	\$ 6,528,308
Net Excess (Deficit)	\$ 18,582	\$ 347,403	\$ 236,063	\$ 13,517
ENDING FUND BALANCE	\$ 380,707	\$ 478,456	\$ 616,770	\$ 630,287

CV LINK (FUND 618) & ATP (FUND 626)

	FY2016/17 Actual	FY2017/18 Budget	FY2017/18 Yr. End Est.	FY2018/19 Budget
BEGINNING FUND BALANCE	\$ -	\$ (484,992)	\$ (484,992)	\$ -
REVENUES:				
6042 RCTC - PP&M	\$ 74,472	\$ 20,000	\$ 62,235	\$ 5,000
7031 Other Revenue	2,481,096	7,520,000	4,176,992	25,828,000
8001 Investment Income	-	-	-	-
Total Revenues	\$ 2,555,568	\$ 7,540,000	\$ 4,239,227	\$ 25,833,000
EXPENDITURES:				
Personnel				
1101 Salaries	\$ 242,487	\$ 181,527	\$ 106,948	\$ 182,610
1103 Auto Allowance	1,736	1,008	1,008	720
1211 PERS	27,430	16,276	13,701	21,901
1213 Medicare / FICA	3,684	2,632	1,619	2,649
1221 Group Insurance	29,159	25,405	12,495	24,603
1226 Unemployment	463	559	70	567
1231 State Compensation	1,728	1,873	1,120	1,892
1241 Long Term Disability	1,023	841	467	806
1261 Deferred Compensation	708	411	411	294
Total Personnel Expenditures	\$ 308,418	\$ 230,532	\$ 137,839	\$ 236,042
Non-Personnel				
2321 Communications / Phone	\$ 2,539	\$ 1,954	\$ 1,218	\$ 1,732
2341 Advertising	-	102	818	84
2353 Comprehensive Insurance	12,461	9,700	6,787	9,229
2401 Memberships / Registration	42	102	72	84
2415 Postage	40	152	302	125
2417 General Expense	634	1,123	265	923
2418 Per Diem Payments	1,133	-	293	-
2421 Subscriptions	54	245	-	201
2422 Computer Software	3,167	2,467	1,602	2,027
2423 Office Supplies	377	723	464	595
2425 Legal Services	132,541	71,633	12,245	51,342
2427 Medical Services	-	-	-	-
2428 Accounting Services	4,340	3,470	2,362	3,188
2431 Professional Services	8,370	2,961	4,854	420
2451 Equipment Lease / Maintenance	748	714	641	923
2461 Building Lease / Rent	15,958	13,783	7,496	11,327
2481 Printing	345	51	2,449	42
2484 Resource Materials	218	407	122	336
2485 Training - Employee	774	2,348	461	2,139
2502 Local Meetings	620	642	350	529
2503 Travel and Training	1,452	939	645	1,029
2512 Utilities	1,334	2,552	821	1,259
4821 Equipment	-	-	-	-
Total Non-Personnel Expenditures	\$ 187,147	\$ 116,068	\$ 44,267	\$ 87,534
Other				
2432 Consultants / Service Providers	\$ 2,966,082	\$ 7,520,000	\$ 1,192,000	\$ 1,100,000
2433 Construction / Project Costs	23,000	10,000	2,500,000	24,728,000
3500 Operating Transfers Out	-	58,744	40,655	54,146
9000 Operating Transfers In	(444,087)	-	(160,526)	(372,722)
Total Other	\$ 2,544,995	\$ 7,588,744	\$ 3,572,129	\$ 25,509,424
Total Personnel/Non-Personnel/Other	\$ 3,040,560	\$ 7,935,344	\$ 3,754,235	\$ 25,833,000
Net Excess (Deficit)	\$ (484,992)	\$ (395,344)	\$ 484,992	\$ -
ENDING FUND BALANCE	\$ (484,992)	\$ (880,336)	\$ -	\$ -

MSHCP (FUND 631 & 634)

	FY2016/17 Actual	FY2017/18 Budget	FY2017/18 Yr. End Est.	FY2018/19 Budget
BEGINNING FUND BALANCE	\$ 42,377	\$ 42,377	\$ 42,377	\$ 42,377
REVENUES:				
7001 MSHCP /CVCC	\$ 687,216	\$ 695,357	\$ 604,757	\$ 689,461
7031 Other Revenue	3	-	-	-
Total Revenues	\$ 687,219	\$ 695,357	\$ 604,757	\$ 689,461
EXPENDITURES:				
Personnel				
1101 Salaries	\$ 430,611	\$ 350,335	\$ 298,898	\$ 352,172
1103 Auto Allowance	1,150	792	1,062	720
1211 PERS	69,095	50,136	50,707	70,980
1213 Medicare / FICA	6,546	5,080	4,523	5,105
1221 Group Insurance	71,926	62,011	47,085	58,500
1226 Unemployment	880	1,079	196	1,093
1231 State Compensation	3,059	3,616	3,129	3,647
1241 Long Term Disability	1,813	1,623	1,305	1,553
1261 Deferred Compensation	469	323	447	294
Total Personnel Expenditures	\$ 585,549	\$ 474,995	\$ 407,352	\$ 494,064
Non-Personnel				
2321 Communications / Phone	\$ 4,940	\$ 3,772	\$ 3,635	\$ 3,837
2341 Advertising	-	697	-	661
2353 Comprehensive Insurance	21,553	18,725	18,847	17,786
2401 Memberships / Registration	78	197	200	161
2415 Postage	610	914	331	861
2417 General Expense	1,132	2,168	746	1,777
2418 Per Diem Payments	2,082	-	836	-
2421 Subscriptions	105	473	-	388
2422 Computer Software	12,785	12,858	11,308	12,002
2423 Office Supplies	667	1,897	1,196	1,644
2425 Legal Services	6,541	9,654	5,246	9,087
2427 Medical Services	-	-	-	-
2428 Accounting Services	7,573	6,701	6,598	6,144
2431 Professional Services	2,605	6,716	2,792	1,802
2451 Equipment Lease / Maintenance	1,720	1,380	1,800	1,777
2461 Building Lease / Rent	28,274	26,609	20,970	21,823
2481 Printing	686	599	951	580
2484 Resource Materials	1,137	788	344	645
2485 Training - Employee	2,870	4,533	2,096	4,123
2502 Local Meetings	1,451	1,242	1,226	1,018
2503 Travel and Training	2,473	2,348	1,945	2,518
2512 Utilities	2,388	4,927	2,310	2,420
4821 Equipment	-	-	371	-
Total Non-Personnel Expenditures	\$ 101,670	\$ 107,198	\$ 83,748	\$ 91,054
Other				
2432 Consultants	\$ -	\$ -	\$ -	\$ -
3500 Operating Transfers Out	-	113,164	113,657	104,343
Total Other	\$ -	\$ 113,164	\$ 113,657	\$ 104,343
Total Personnel/Non-Personnel/Other	\$ 687,219	\$ 695,357	\$ 604,757	\$ 689,461
Net Excess (Deficit)	\$ -	\$ -	\$ -	\$ -
ENDING FUND BALANCE	\$ 42,377	\$ 42,377	\$ 42,377	\$ 42,377

REGIONAL STREET SWEEPING (FUND 702)

	FY2016/17 Actual	FY2017/18 Budget	FY2017/18 Yr. End Est.	FY2018/19 Budget
BEGINNING FUND BALANCE	\$ 423,634	\$ 243,935	\$ 243,935	\$ 548,178
REVENUES:				
3031 MSRC	\$ -	\$ 125,000	\$ 250,000	\$ -
5012 Air Quality Enhancement / COLMAC	150,000	150,000	150,000	150,000
7031 Other Revenue	-	-	23,261	14,691
8001 Investment Income	1,419	-	600	-
Total Revenues	\$ 151,419	\$ 275,000	\$ 423,861	\$ 164,691
EXPENDITURES:				
Personnel				
1101 Salaries	\$ 7,778	\$ 17,959	\$ 3,080	\$ 9,724
1103 Auto Allowance	-	-	2	-
1211 PERS	772	1,654	360	1,261
1213 Medicare / FICA	118	260	47	142
1221 Group Insurance	2,016	3,664	669	2,157
1226 Unemployment	10	55	2	30
1231 State Compensation	56	185	32	101
1241 Long Term Disability	33	83	13	43
1261 Deferred Compensation	-	-	1	-
Total Personnel Expenditures	\$ 10,783	\$ 23,860	\$ 4,206	\$ 13,458
Non-Personnel				
2321 Communications / Phone	\$ 81	\$ 193	\$ 55	\$ 93
2341 Advertising	-	10	86	5
2353 Comprehensive Insurance	4,217	5,260	3,866	4,795
2401 Memberships / Registration	2	10	2	5
2415 Postage	1	15	1	7
2417 General Expense	20	111	8	50
2418 Per Diem Payments	30	-	10	-
2421 Subscriptions	1	24	-	11
2422 Computer Software	143	244	61	109
2423 Office Supplies	12	72	13	32
2425 Legal Services	28	162	34	72
2427 Medical Services	-	-	-	-
2428 Accounting Services	151	343	68	171
2431 Professional Services	42	293	28	23
2451 Equipment Lease / Maintenance	26	71	19	50
2461 Building Lease / Rent	518	1,364	218	608
2481 Printing	9	5	10	2
2484 Resource Materials	8	40	4	18
2485 Training - Employee	25	232	14	115
2502 Local Meetings	6	214	110	178
2503 Travel and Training	11	43	10	28
2512 Utilities	41	253	25	68
Total Non-Personnel Expenditures	\$ 5,372	\$ 8,959	\$ 4,642	\$ 6,440
Other				
2432 Consultants	-	-	-	-
2433 Construction / Project Costs	\$ 593,809	\$ 600,091	\$ 599,685	\$ 599,685
3500 Operating Transfers Out	-	5,803	1,175	2,886
9000 Operating Transfers In	(278,846)	(363,713)	(490,090)	(427,936)
Total Other	\$ 314,963	\$ 242,181	\$ 110,770	\$ 174,635
Total Personnel/Non-Personnel/Other	\$ 331,118	\$ 275,000	\$ 119,618	\$ 194,533
Net Excess (Deficit)	\$ (179,699)	\$ -	\$ 304,243	\$ (29,842)
ENDING FUND BALANCE	\$ 243,935	\$ 243,935	\$ 548,178	\$ 518,336

COLMAC (FUND 711)

	FY2016/17 Actual	FY2017/18 Budget	FY2017/18 Yr. End Est.	FY2018/19 Budget
BEGINNING FUND BALANCE	\$ 2,956	\$ 2,972	\$ 2,972	\$ 3,007
REVENUES:				
5012 Air Quality Enhancement / COLMAC	\$ -	\$ 9,880	\$ -	\$ -
8001 Investment Income	16	30	35	20
Total Revenues	\$ 16	\$ 9,910	\$ 35	\$ 20
EXPENDITURES:				
Personnel				
1101 Salaries	\$ -	\$ 1,432	\$ -	\$ 1,674
1211 PERS	-	218	-	359
1213 Medicare / FICA	-	21	-	25
1221 Group Insurance	-	200	-	196
1226 Unemployment	-	4	-	5
1231 State Compensation	-	15	-	18
1241 Long Term Disability	-	7	-	8
Total Personnel Expenditures	\$ -	\$ 1,897	\$ -	\$ 2,285
Non-Personnel				
2321 Communications / Phone	\$ -	\$ 15	\$ -	\$ 17
2341 Advertising	-	1	-	1
2353 Comprehensive Insurance	-	76	-	88
2401 Memberships / Registration	-	1	-	1
2415 Postage	-	1	-	1
2417 General Expense	-	9	-	9
2418 Per Diem Payments	-	-	-	-
2421 Subscriptions	-	2	-	2
2422 Computer Software	-	19	-	19
2423 Office Supplies	-	6	-	6
2425 Legal Services	-	13	-	12
2428 Accounting Services	-	27	-	30
2431 Professional Services	-	9,903	-	2,504
2451 Equipment Lease / Maintenance	-	5	-	9
2461 Building Lease / Rent	-	108	-	108
2481 Printing	-	1	-	1
2484 Resource Materials	-	3	-	3
2485 Training - Employee	-	18	-	20
2502 Local Meetings	-	5	-	5
2503 Travel and Training	-	3	-	5
2512 Utilities	-	20	-	12
Total Non-Personnel Expenditures	\$ -	\$ 10,236	\$ -	\$ 2,853
Other				
2433 Construction / Project Costs	-	-	-	-
3500 Operating Transfers Out	-	480	-	490
9000 Operating Transfers In	-	-	-	(2,601)
Total Other	\$ -	\$ 480	\$ -	\$ (2,111)
Total Personnel/Non-Personnel/Other	\$ -	\$ 12,613	\$ -	\$ 3,027
Net Excess (Deficit)	\$ 16	\$ (2,703)	\$ 35	\$ (3,007)
ENDING FUND BALANCE	\$ 2,972	\$ 269	\$ 3,007	\$ -

**COACHELLA VALLEY ASSOCIATION OF GOVERNMENTS
ANNUAL SALARY SCHEDULE AND APPROVED
CLASSIFICATIONS FROM JULY 1 2018 TO JUNE 30 2019**

POSITION	CLASSIFICATION	STEP 1	STEP 2	STEP 3	STEP 4	STEP 5	STEP 6
3010	Executive Director	-	-	-	-	-	229,412
2010	Deputy Executive Director	146,559	153,887	161,581	169,660	178,143	182,597
2015	(VACANT) (NOT BUDGETED) Director of Administrative Services	139,232	146,194	153,504	161,179	169,238	173,469
2016	(VACANT) (NOT BUDGETED) Director of Environmental Resources	139,232	146,194	153,504	161,179	169,238	173,469
2017	Director of Transportation	139,232	146,194	153,504	161,179	169,238	173,469
2020	Director II - Environmental Resources	118,369	124,287	130,501	137,026	143,877	147,474
2021	Director II - Community Resources	118,369	124,287	130,501	137,026	143,877	147,474
2023	(VACANT) (BUDGETED) Director II - Desert Community Energy	118,369	124,287	130,501	137,026	143,877	147,474
2030	GIS/Fees Programs Director	90,084	94,588	99,317	104,283	109,497	112,234
2031	(VACANT) (BUDGETED) Transportation Engineer	90,084	94,588	99,318	104,283	109,498	112,236
2040	Governmental Projects Manager	82,856	86,999	91,349	95,916	100,712	103,230
2041	Transportation Program Manager	82,856	86,999	91,349	95,916	100,712	103,230
2041	Transportation Program Manager	82,856	86,999	91,349	95,916	100,712	103,230
2042	Information Technology Manager	82,856	86,999	91,349	95,916	100,712	103,230
2043	(VACANT) (NOT BUDGETED) Desert Comm. Energy Program Manager	82,856	86,999	91,349	95,916	100,712	103,230
2044	Accounting Manager	82,856	86,999	91,349	95,916	100,712	103,230
2060	(VACANT) (NOT BUDGETED) Associate Regional Planner	72,699	76,334	80,151	84,159	88,367	90,576
2070	(VACANT) (NOT BUDGETED) Geographic Information Systems Analyst	70,430	73,952	77,650	81,533	85,610	87,750
2071	Management Analyst - Env. Resources	70,430	73,952	77,650	81,533	85,610	87,750
2072	Management Analyst - Comm. Resources	70,430	73,952	77,650	81,533	85,610	87,750
2073	Management Analyst - Bio. Monitoring	70,430	73,952	77,650	81,533	85,610	87,750
2074	Management Analyst - Transportation	70,430	73,952	77,650	81,533	85,610	87,750

**COACHELLA VALLEY ASSOCIATION OF GOVERNMENTS
ANNUAL SALARY SCHEDULE AND APPROVED
CLASSIFICATIONS FROM JULY 1 2018 TO JUNE 30 2019**

POSITION	CLASSIFICATION	STEP 1	STEP 2	STEP 3	STEP 4	STEP 5	STEP 6
2075	<u>(VACANT) (NOT BUDGETED)</u> Management Analyst - Govt. Proj.	70,430	73,952	77,649	81,532	85,608	87,747
2090	Executive Assistant	55,938	58,735	61,672	64,756	67,994	69,694
1010	<u>(VACANT) (NOT BUDGETED)</u> Accountant	55,938	58,735	61,672	64,755	67,993	69,694
1011	<u>(VACANT) (NOT BUDGETED)</u> Senior Prog. Assistant - Env. Resources	55,938	58,735	61,672	64,755	67,993	69,694
1040	<u>(VACANT) (NOT BUDGETED)</u> Program Assistant II - Comm. Resources	48,431	50,853	53,396	56,066	58,869	60,341
1041	Program Assistant II - Env. Resources	48,431	50,853	53,396	56,066	58,869	60,341
1042	<u>(VACANT) (NOT BUDGETED)</u> Administrative Services Assistant	48,431	50,853	53,396	56,066	58,869	60,341
1043	Program Assistant II - Transportation	48,431	50,853	53,396	56,066	58,869	60,341
1070	Accounting Assistant	46,128	48,434	50,856	53,399	56,069	57,471
1071	Technician	46,128	48,434	50,856	53,399	56,069	57,471
1080	<u>(VACANT) (BUDGETED-PART TIME)</u> Receptionist	43,821	46,012	48,313	50,729	53,265	54,597

ACRONYMS AND ABBREVIATIONS

AB 2766	Assembly Bill – Motor Vehicle Registration Fee Assessment
AB 939	Assembly Bill – Solid Waste and Recycling
AQMD	Air Quality Management District
ATP	Active Transportation Program
AV	Assessed Valuation
CEQA	California Environmental Quality Act
CIP	Capital Improvement Plan
CMAQ	Congestion Mitigation and Air Quality
CMP/CMS	Congestion Management Program/System
CPI	Consumer Price Index
EA	Environmental Assessment
EIR	Environmental Impact Report
EIS	Environmental Impact Statement
GIS	Geographic Information Systems
HBR	Highway Bridge Program
HBRR	Highway Bridge Replacement and Rehabilitation
HCR	Human and Community Resources
HERO	Home Energy Renovation Opportunity
LEED	Leadership in Energy and Environmental Design
LTF	Local Transportation Funds
MSHCP	Multiple Species Habitat Conservation Plan
MSRC	Mobile Source Reduction Review Committee (Air Pollution)
NEPA	National Environmental Policy Act
O&D	Origin & Destination
PACE	Property Assessed Clean Energy
PC	Personnel Committee
PCI	Pavement Condition Index
PERS	Public Employees Retirement System
PM10	Particulate Matter less than 10 microns
PP&M	Plans, Programming and Monitoring
RACE	Regional Arterial Cost Estimate
RCTC	Riverside County Transportation Commission
RHNA	Regional Housing Needs Assessment
RTIP	Regional Transportation Improvement Program
RTP	Regional Transportation Plan
SCAG	Southern California Association of Governments
SIP	State Implementation Plan
STIP	State Transportation Improvement Plan
STP	State Transportation Plan
TPPS	Transportation Project Prioritization Study
TUMF	Transportation Uniform Mitigation Fee
WWR	Whitewater River